

Product

Code

Packing

Product

Code

Packing

# LATEX AGGLUTINATION TEST KITS

Latex test kits enable rapid detection by latex agglutination for confirmation of presumptive pathogens.

<b>HiClostridium difficile Latex Test Kit</b> Organism : <i>Clostridium difficile</i> cultured Source : From selective media culture plate Store at 2-8°C	LK01-25NO	25no	<b>HiStrep™ Latex Test Kit</b> Organism : <i>Streptococci</i> of Lancefield groups A, B, C, D, F and G Source : From selective media culture plate Store at 2-8°C	LK06-25NO	25no
	LK01-50NO	50no		LK06-50NO	50no
<b>HiSalmonella™ Latex Test Kit</b> Organism : <i>Salmonella</i> Source : From selective media culture plate Store at 2-8°C	LK02-25NO	25no	<b>HiListeria™ Latex Test Kit</b> Organism : <i>Listeria spp.</i> Source : From selective media culture plate Store at 2-8°C	LK07-25NO	25no
	LK02-50NO	50no		LK07-50NO	50no
<b>HiStaph Latex Test Kit</b> Organism : <i>Staphylococcus aureus</i> Source : From selective media culture plate Store at 2-8°C	LK03-50NO	50no	<b>HiRotavirus Latex Test Kit</b> Organism : Rotavirus antigen Source : From selective media culture plate Store at 2-8°C	LK08-10NO	10no
	LK03-100NO	100no		LK08-25NO	25no
LK08-50NO	50no	LK08-50NO		50no	
<b>HiLegionella Latex Test Kit</b> Organism : <i>Legionella pneumophila</i> Source : From selective media culture plate Store at 2-8°C	LK04-25NO	25no	<b>HiE.coli™ Latex Test Kit</b> Organism : <i>E.coli</i> serotype O157 Source : From selective media culture plate Store at 2-8°C	LK13-50NO	50no
	LK04-50NO	50no			

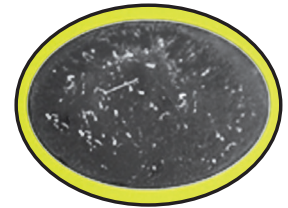
## Latex agglutination test



1. Negative Control



2. Positive Control



3. Test Sample

Refer Page **711**



PCR on the **Go...**  
with Car Charger Adapter



## Wee Series

PCR MACHINE LIKE NEVER SEEN BEFORE

Ultralight Sleek Compact 3Kg & Wi-Fi Enabled

### EXCEPTIONAL FEATURES

- Ramp rate 5°C/s
- Touch screen
- Wifi Module Built-in
- Big Storage Capacity
- USB communication Port

### EFFORTLESS, INTUITIVE PROGRAMMING & OPERATION

- Powerful software
- Easy to learn
- Easy to use, even for new operators

### UNMATCHED THERMAL PERFORMANCE

- Superior Accuracy ( $\leq \pm 0.2^\circ\text{C}$ )
- Best in Class Uniformity ( $\leq \pm 0.2^\circ\text{C}$ )