

Product

Code

Packing

Product

Code

Packing

## HEMATOLOGY KITS

### Sickle Cell Anemia Detection Kits

These kits are developed for diagnosis of Sickle Cell Anemia Disease.

#### Primary Screening (Turbidity based)

This kit is developed for screening of Sickle Cell Anemia, based on solubility difference between HbS and HbA

<b>Hi-Super Speed Sickle Kit (Solubility Test for detection of Hemoglobin 'S')</b> [Pre-weighed reagent mix for five tests in one tube]	<b>MBP006-50TST</b>	<b>50 tests</b>
--	---------------------	-----------------

#### Secondary Screening (Centrifugation based)

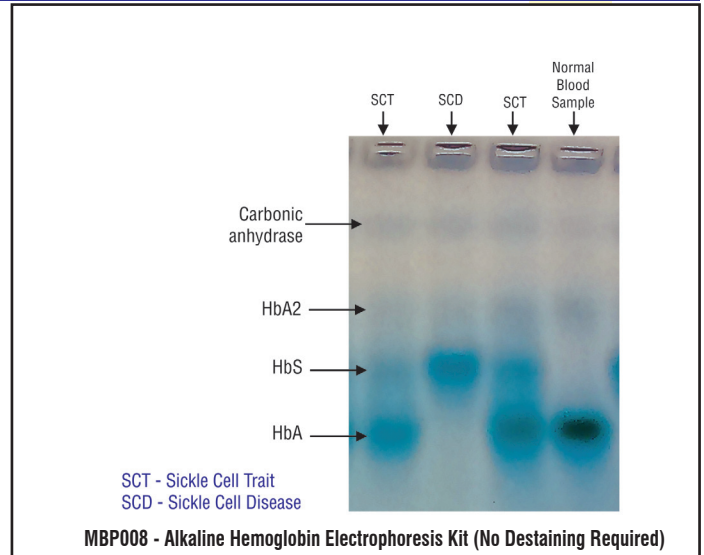
This kit is based on the solubility difference between HbS and HbA. This kit has an added advantage for partial distinction between Homozygous and Heterozygous in sickle cell anemia patients.

<b>Hi-Speed Sickle Kit (Centrifugation based detection of Hemoglobin 'S')</b> On receipt store at 2 - 8°C	<b>MBP003-50TST</b>	<b>50 tests</b>
--	---------------------	-----------------

#### Confirmatory Kits

<b>Alkaline Hemoglobin Electrophoresis Kit</b> This kit is intended for discrimination of hemoglobin variants using alkaline gel electrophoresis. It is a confirmatory tool for detection of sickle cell anemia.	<b>MBP001-112 RUNS</b>	<b>112 runs (4 Gels)</b>
	<b>MBP001-224 RUNS</b>	<b>224 runs (8 Gels)</b>

<b>Alkaline Hemoglobin Electrophoresis Kit (No Destaining Required)</b> This kit is intended for discrimination of hemoglobin variants using alkaline gel electrophoresis. This method requires no destaining for discrimination of Hemoglobin variants. It is a confirmatory tool for detection of sickle cell anemia.	<b>MBP008-224 RUNS</b>	<b>224 runs (8 Gels)</b>
--	------------------------	--------------------------

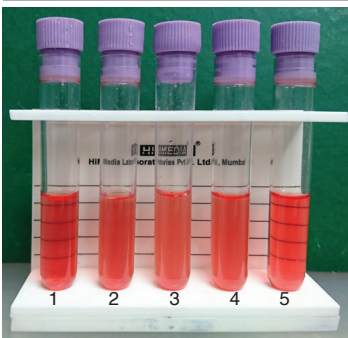


### Thalassemia Detection Kit

These kits are developed for diagnosis of Thalassemia.

#### Screening Test

<b>Hi- Thal Kit</b> This is a screening kit for Thalassemia	<b>New</b> <b>MBP010-50TST</b>	<b>50tst</b>
--	--------------------------------	--------------



Result for Hi-Thal Kit

<b>Tube 1 -</b>	<b>Negative Blood Sample for Thalassemia</b>
<b>Tube 2, 3 &amp; 4 -</b>	<b>Positive Blood Sample for Thalassemia</b>
<b>Tube 5 -</b>	<b>Negative Blood Sample for Thalassemia</b>

#### Thalassemia Detection Kit (PCR Based) (Also see page no. 565)

<b>Beta-Thalassemia Detection Kit (Multiplex)</b> This Multiplex kit is intended for specific and accurate detection of Beta-Thalassemia in Asian population. Store at -20°C	<b>MBPCR014-10R</b>	<b>10r#</b>
	<b>MBPCR014-25R</b>	<b>25r#</b>
	<b>MBPCR014-50R</b>	<b>50r#</b>

<b>Beta-Thalassemia Detection Kit (Uniplex)</b> This Uniplex kit is intended for specific and accurate detection of mutant and normal Beta-Thalassemia in Asian population. Store at -20°C	<b>MBPCR014A-10R</b>	<b>10r#</b>
	<b>MBPCR014A-25R</b>	<b>25r#</b>
	<b>MBPCR014A-50R</b>	<b>50r#</b>