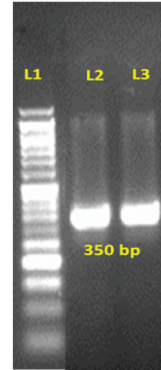


Product	Code	Packing
Semi-Q PCR Kits		
Salmonella Detection Kit See Page No.565	MBPCR004-10R	10r#
	MBPCR004-25R	25r#
	MBPCR004-50R	50r#
Animal Hemorrhagic septicemia Detection Kit (Semi-Q PCR Based) New	MBPCR109-10R	10r#
	MBPCR109-25R	25r#
	MBPCR109-50R	50r#
Animal Brucella Detection Kit (Semi-Q PCR Based) New	MBPCR113-10R	10r#
	MBPCR113-25R	25r#
	MBPCR113-50R	50r#
Animal Mycoplasma gallisepticum Detection Kit (Semi-Q PCR Based) New	MBPCR114-10R	10r#
	MBPCR114-25R	2r#
	MBPCR114-50R	50r#
Animal Theileria Detection Kit (Semi-Q PCR Based) New	MBPCR115-10R	10r#
	MBPCR115-25R	25r#
	MBPCR115-50R	50r#
Animal Peste des petits ruminants (PPR) Detection Kit (Semi-Q PCR Based) New	MBPCR116-10R	10r#
	MBPCR116-25R	25r#
	MBPCR116-50R	50r#

Product	Code	Packing
Data representing PPR DNA amplification using Animal PPR Detection Kit (MBPCR116)		



Lane	Sample
L1	100bp DNA Ladder
L2 and L3	Amplicon of PPR (350 bp)

Animal Babesia bigemina Detection Kit (Semi-Q PCR Based) New	MBPCR117-10R	10r#
	MBPCR117-25R	25r#
	MBPCR117-50R	50r#
Animal Newcastle Disease Virus (NDV) Detection Kit (Semi-Q PCR Based) New	MBPCR118-10R	10r#
	MBPCR118-25R	25r#
	MBPCR118-50R	50r#
Animal Pox Detection Kit (Semi-Q PCR Based) New	MBPCR119-10R	10r#
	MBPCR119-25R	25r#
	MBPCR119-50R	50r#
Animal Infectious Bovine Rhinotracheitis (IBR) Detection Kit (Semi-Q PCR Based) New (for detection of Bovine Herpes Virus Type 1)	MBPCR120-10R	10r#
	MBPCR120-25R	25r#
	MBPCR120-50R	50r#



Introducing Veterinary Diagnostics Kits
Nurturing

Human-Animal Bond

For Animals are Precious



Available in Conventional PCR & Real-Time PCR (SYBr) Platforms

Product Name	Semi-Q Codes	Real-Time SYBr Codes
Haemorrhagic Septicemia (<i>Pasteurella multocida</i>)	MBPCR109	MBPCR129
<i>Brucella</i> spps.	MBPCR113	MBPCR121
<i>Mycoplasma gallisepticum</i>	MBPCR114	MBPCR122
<i>Theileria</i> spps.	MBPCR115	MBPCR123
Peste des petits ruminants (PPR)	MBPCR116	MBPCR124
<i>Babesia bigemina</i>	MBPCR117	MBPCR125
Newcastle Disease Virus (NDV)	MBPCR118	MBPCR126
Animal Pox	MBPCR119	MBPCR127
Infectious Bovine Rhinotracheitis (IBR)	MBPCR120	MBPCR128
<i>Salmonella</i> spps.	MBPCR004	MBPCR024