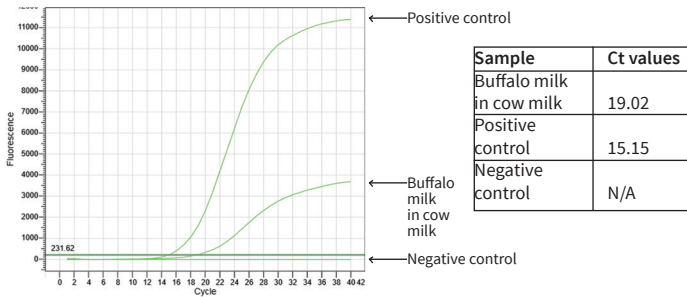


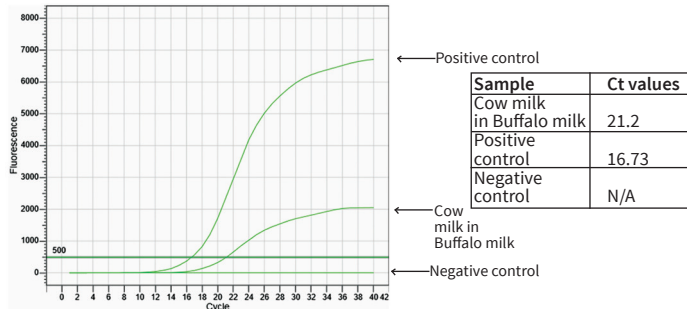
Product	Code	Packing
<b>Buffalo Detection Kit (Real-Time Probe based PCR)</b> <span style="color:red">New</span>	MBPCR138-10R	10r#
	MBPCR138-25R	25r#
	MBPCR138-50R	50r#

**Buffalo Detection Kit (MBPCR138) (Sensitivity : 0.5%)**



Product	Code	Packing
<b>Cow Detection Kit (Real-Time Probe based PCR)</b> <span style="color:red">New</span>	MBPCR139-10R	10r#
	MBPCR139-25R	25r#
	MBPCR139-50R	50r#

**Cow Detection Kit (MBPCR139)**



**Seafood Diagnostic Kits Extraction Kit**

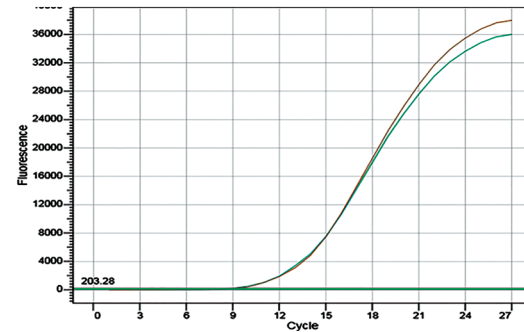
<b>HiPurA™ White Spot Syndrome Virus (WSSV) DNA Purification Kit</b> Principle : Solution Based Sample material : 100 mg infected tissue sample. See Page No. 553	MB572-20PR	20pr*
	MB572-50PR	50pr*
	MB572-250PR	250pr*

Product	Code	Packing
---------	------	---------

PCR Kits		
<b>White Spot Syndrome Virus (WSSV) Detection Kit</b> (Semi-Quantitative based PCR ) See Page No. 565	MBPCR013-10R	10r#
	MBPCR013-25R	25r#
	MBPCR013-50R	50r#

<b>White Spot Syndrome Virus (WSSV) Detection Kit</b> (Real Time SYBr Based PCR) See Page No. 565	MBPCR093-10R	10r#
	MBPCR093-25R	25r#
	MBPCR093-50R	50r#

**Data representing Real Time PCR amplification of WSSV Detection using MBPCR093-White Spot Syndrome Virus (WSSV) Detection Kit**



Sr. No.	Sample	Ct Value
1	Negative Control	N/A
2	Amplicon Using WSSV Outer Primer	8.96
3	Amplicon Using WSSV Outer Primer	8.88

<b>Palm White Spot Syndrome Virus (WSSV) Detection Kit</b> Kit for White spot syndrome virus detection on Palm PCR machine. Kit includes : PCR Reagents, Primers, Positive control & Palm PCR Tubes. See Page No. 567	MBPCR100 - 25R	25r#
	MBPCR100- 50R	50r#

**Kits for GMO Detection**

Semi-Quantitative PCR Kit		
<b>GMO (Genetically Modified Organism) Detection Kit (Semi-Q PCR Based)</b>	MBPCR055-10R	10r#
	MBPCR055-25R	25r#
	MBPCR055-50R	50r#

Real-time PCR Kits (SYBr Based)		
<b>GMO (Genetically Modified Organism) Detection Kit (Real-time PCR Based)</b>	MBPCR063-10R	10r#
	MBPCR063-25R	25r#
	MBPCR063-50R	50r#

**Data representing GMO detection using GMO (Genetically Modified Organism) Detection Kit (Real-time PCR Based) - (MBPCR063)**

