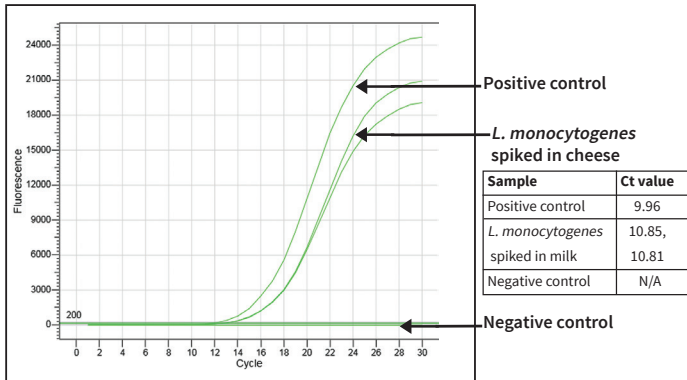


Product	Code	Packing
<b>Listeria monocytogenes Food Detection Kit (Real-time SYBr Based PCR)</b>	MBPCR025A-10R	10r#
	MBPCR025A-25R	25r#
	MBPCR025A-50R	50r#

### Real Time SYBr Based PCR Data for *L. monocytogenes* Detection in Spiked Cheese (Code : MBPCR025A)



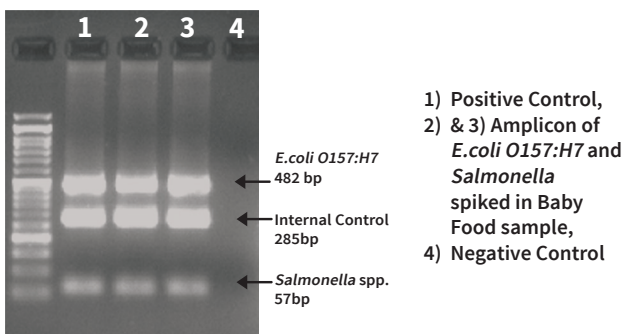
### Semi-Quantitative PCR Kits (Provided with Positive Control & Internal Control)

<b>Salmonella Food Detection Kit (Semi-Quantitative PCR)</b>	MBPCR004A-10PR	10pr*
	MBPCR004A-25PR	25pr*
	MBPCR004A-50PR	50pr*

### Food Extraction - PCR Combo Kits

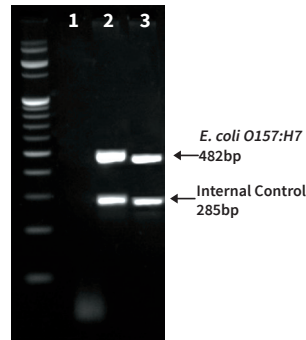
<b><i>E. coli</i> O157:H7 and Salmonella spp. Food Detection Kit</b> Kit detects <i>E. coli</i> O157:H7 and <i>Salmonella</i> spp. from food samples. Principle : Column based extraction followed by Semi-Q PCR.	MBT112-10PR	10pr*
	MBT112-25PR	25pr*
<b><i>E. coli</i> O157:H7 and Salmonella spp. Food Detection Kit (Provided with culture media)</b> Kit detects <i>E. coli</i> O157:H7 and <i>Salmonella</i> spp. from food samples. This kit is provided with culture media for enrichment of food samples. Principle : Column based extraction followed by Semi-Q PCR.	MBT113-10PR	10pr*
	MBT113-25PR	25pr*

### *E. coli* O157:H7 and Salmonella Detection in Spiked Baby Food (Code : MBT113)



Product	Code	Packing
<b>Food Heat Lysis - PCR Combo Kits</b>		
<b><i>E. coli</i> O157:H7 Food Detection Kit</b> Kit detects <i>E. coli</i> O157:H7 from food samples. Principle : Short lysis followed by Semi-Q PCR.	MBT114-10PR	10pr*
	MBT114-25PR	25pr*

### *E. coli* O157:H7 Detection in Spiked Baby Food (Code : MBT114)



1) Negative Control,  
2) Positive Control  
3) Amplicon of *E. coli* O157:H7 spiked in Baby Food sample along with internal control

<b><i>E. coli</i> O157:H7 Food Detection Kit (Provided with culture media)</b> Kit detects <i>E. coli</i> O157:H7 from food samples. This kit is provided with culture media for enrichment of food samples. Principle : Short lysis followed by Semi-Q PCR	MBT115-10PR	10pr*
	MBT115-25PR	25pr*

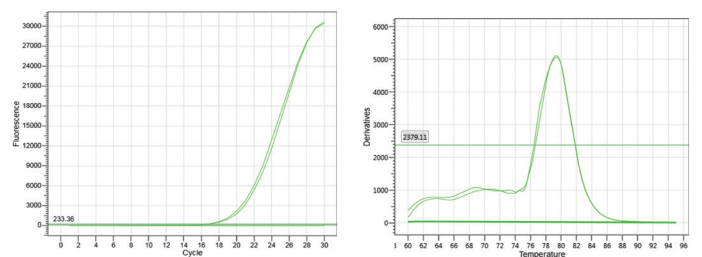
<b>Salmonella Food Detection Kit</b> Kit detects <i>Salmonella</i> spp. from food samples. Principle : Short lysis extraction followed by Semi-Q PCR	MBT116-10PR	10pr*
	MBT116-25PR	25pr*

<b>Salmonella Food Detection Kit (Provided with culture media)</b> Kit detects <i>Salmonella</i> spp. from food samples. This kit is provided with culture media for enrichment of food samples. Principle : Short lysis extraction followed by Semi-Q PCR	MBT117-10PR	10pr*
	MBT117-25PR	25pr*

### Adulteration Identification Kits

<b>Pork Detection Kit (Real-Time SYBr based PCR Kit)</b>	MBPCR098-10R	10r#
	MBPCR098-25R	25r#
	MBPCR098-50R	50r#

### Pork Detection by MBPCR098 (Sensitivity : 0.01%)



Sample	Ct value	Melt curve
Positive control	16.81	79.4
Positive control	16.56	79.4
Negative control	N/A	N/A

<b>Pork Detection Kit (Real-Time Probe Based PCR)</b>	<b>New</b> MBPCR136-10R	10r#
	MBPCR136-25R	25r#
	MBPCR136-50R	50r#