

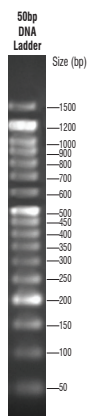
Product	Code	Packing	Product	Code	Packing
---------	------	---------	---------	------	---------

Reagents for Southern & Northern Blotting

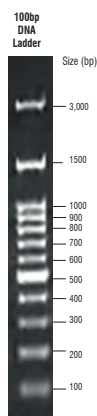
20X SSC Saline Sodium Citrate Used in Southern Hybridization and Northern hybridization	ML030-500ML ML030-2X500ML	500ml 2X500ml	Neutralization Buffer B (for transfer to nylon membranes) Used in Southern Hybridization	ML035-100ML ML035-500ML	100ml 500ml
Alkaline Transfer Buffer Used in Southern Hybridization	ML032-100ML ML032-500ML	100ml 500ml	20X SSPE Buffer, pH 7.4 (Saline Sodium Phosphate EDTA buffer) Used in Southern Hybridization	ML055-200ML ML055-1L	200ml 1lt
Denaturation Solution Used in Southern Hybridization	ML033-100ML ML033-500ML	100ml 500ml	Denhardt's Solution (100X) Used as a blocking reagent during Northern or southern hybridization Store at -20°C	ML095-50ML	50ml
Neutralization Buffer A (for transfer to uncharged membranes) Used in Southern Hybridization	ML034-100ML ML034-500ML	100ml 500ml			

DNA Ladders

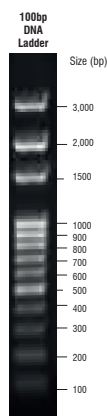
#50bp DNA Ladder The ladder consists of 17 DNA fragments ranging in size from 50bp to 1500bp. Supplied premixed with loading buffer and is ready to use. Recommended load: 3 µl/lane Concentration : 112 µg/ml	MBT084-50LN MBT084-200LN	50ln* (150µl) 200ln* (4x150µl)	#1kb DNA Ladder The 1kb DNA ladder consists of 11 blunt-ended DNA fragments ranging from 500bp to 10kb in increments. Supplied premixed with loading buffer and is ready to use. Recommended load: 3 µl/lane Concentration : 0.1 µg/µl	MBT051-50LN MBT051-200LN	50ln* (150µl) 200ln* (4x150µl)
#100bp DNA Ladder The 100bp DNA ladder consists of 13 fragments ranging from 100bp to 3000bp in increments. Supplied premixed with loading buffer and is ready to use. Recommended load: 2 µl/lane Concentration : 0.1 µg/µl	MBT049-50LN MBT049-200LN	50ln* (100µl) 200ln* (4x100µl)	#High Range DNA Ladder The High Range DNA Ladder includes 14 fragments ranging from 250bp-25kb. The 1kb and 3kb bands have increased intensity to serve as reference points. Supplied premixed with loading buffer and is ready to use. Recommended load: 3 µl/lane Concentration : 104 µg/ml	MBT090-50LN MBT090-200LN	50ln* (150µl) 200ln* (4x150µl)
#100bp DNA Ladder M The 100bp DNA ladder M consists of 12 fragments ranging from 100bp to 3000bp in increments. The 500 & 1500bp bands have increased intensity. Supplied premixed with loading buffer and is ready to use. Recommended load: 3 µl/lane Concentration : 108 µg/ml	MBT130-50LN MBT130-200LN	50ln* (150µl) 200ln* (4x150µl)			



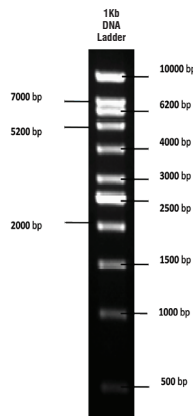
MBT084



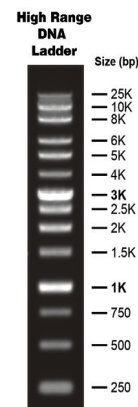
MBT130



MBT049



MBT051



MBT090