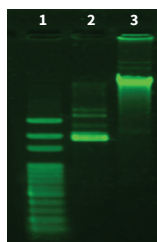


Product	Code	Packing	Product	Code	Packing
---------	------	---------	---------	------	---------

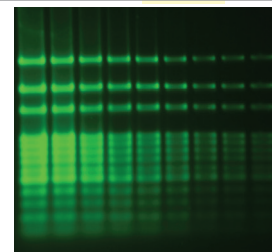
**Buffers/Kits for Nucleic Acid Electrophoresis**

<b>10X TAE</b> Used for gel electrophoresis after dilution to working concentration	ML010-100ML ML010-500ML ML010-2X500ML	100ml 500ml 2X500ml
<b>50X TAE</b> Used for gel electrophoresis after dilution to working concentration	ML016-100ML ML016-500ML ML016-2X500ML	100ml 500ml 2X500ml
<b>10X TBE</b> Used for gel electrophoresis after dilution to working concentration	ML011-100ML ML011-500ML ML011-2X500ML	100ml 500ml 2X500ml
<b>20X TBE</b> Used for gel electrophoresis after dilution to working concentration	ML022-100ML ML022-500ML	100ml 500ml
<b>50X TBE</b> (Supplied as concentrate gel tablet) Used for electrophoresis after dilution to working concentration	ML017-100ML ML017-500ML ML017-2X500ML	100ml 500ml 2X500ml
<b>6X Gel Loading Buffer</b> Store at 2-8°C Glycerol based gel loading buffer for DNA gels with two tracking dyes	ML015-6X1ML	6X1ml
<b>5X TD Solution</b> Store at 2-8°C Ficoll based gel loading buffer for DNA gels with two tracking dyes	ML019-6X1ML	6X1ml
<b>10X Gel Loading Buffer</b> Store at 2-8°C Glycerol based gel loading buffer for DNA gels with two tracking dyes	ML025-5X0.5ML	5X0.5ml
<b>5X Gel Loading Buffer</b> Store at -20°C Glycerol based gel loading buffer for DNA gels with three tracking dyes	ML086-6X1ML	6X1ml

<b>6X Orange Gel Loading Buffer</b> Store at -20°C Glycerol based gel loading buffer for DNA gels with two tracking dyes	ML092-5X1ML	5X1ml
<b>5X Sucrose Gel Loading Dye</b> Store at -20°C Sucrose based gel loading buffer for DNA gels with two tracking dyes	ML112-1ML ML112-5ML	1ml 5ml
<b>5X RNA Gel Loading Buffer</b> Store at 2-8°C Glycerol based gel loading buffer for RNA gels with two tracking dyes	ML048-4X0.25ML	4X0.25ml
<b>10X MOPS Electrophoresis Buffer</b> Used for RNA gel electrophoresis after dilution to working concentration	ML050-2X500ML ML050-4X500ML	2X500ml 4X500ml
<b>Hi-SYBr Safe Gel Stain (10,000X in DMSO)</b> Store at -20°C Used in staining of DNA / RNA gels <b>[Note : Recommended to load with DNA &amp; for Post run staining]</b>	ML053-100µl ML053-500µl	100µl 500µl



Representative data of Gel stained post electrophoresis using ML053 (Lane1: Marker, Lane 2: plasmid DNA, Lane 3: Genomic DNA)



**Sensitivity:** Capable of detecting double stranded DNA (dsDNA) fragments up to 0.1 ng in electrophoresis analysis

<b>Agarose Gel Electrophoresis Kit</b> Contents : Agarose, 50X TAE buffer, Ethidium bromide, Loading buffer	MB570-10PR	10pr*
--	------------	-------

**Pre-Poured™ Gel (Ready to Use Agarose Gels with Ethidium bromide for Electrophoresis)**

<b>Pre-Poured™ Gel-666-28-1</b> (Conc : 1%) (with Ethidium bromide)	MBRPG001-5NO	5no
<b>Pre-Poured™ Gel-666-28-2</b> (Conc : 2%) (with Ethidium bromide)	MBRPG002-5NO	5no
<b>Pre-Poured™ Gel-665-12-1</b> (Conc : 1%) (with Ethidium bromide)	MBRPG005-5NO	5no
<b>Pre-Poured™ Gel-665-12-2</b> (Conc : 2%) (with Ethidium bromide)	MBRPG006-5NO	5no



**Pre-Poured™ Gel-665-12-1 (Conc : 1%) (with Ethidium bromide) (MBRPG005)**