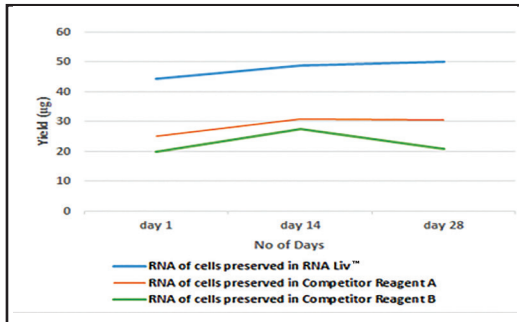


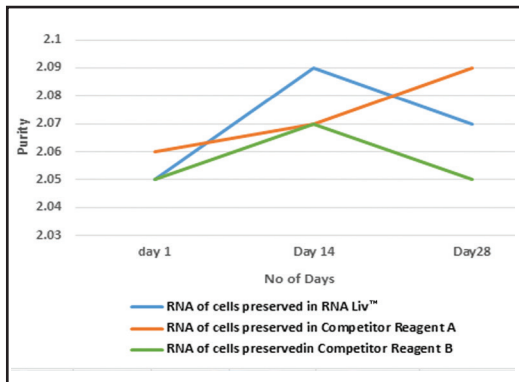
Product	Code	Packing
RNA Liv™ Used for stabilization of RNA in tissue samples	ML161-100ML ML161-250ML	100ml 250ml

Product	Code	Packing
RNase Kil™ Used for removal of RNase contamination from glass, plastic, cleaning of working areas and equipment.	ML162-250ML	250ml

Comparative data of RNA, extracted from animal cells, preserved in RNA Liv™ (ML161) at room temperature for one week



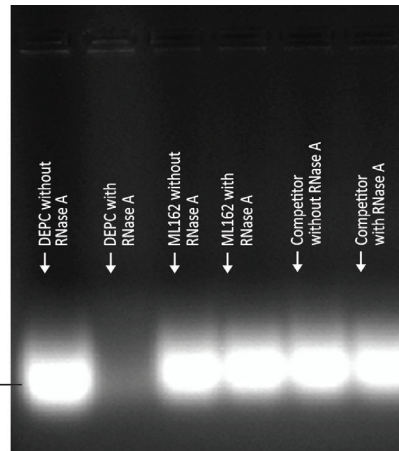
Yield of RNA from Animal cells



Purity of RNA from Animal cells



RNase Kil™ (ML162) in convenient spray bottle



Data for ML162 (RNase Kil™)

SICKLE CELL ANEMIA SCREENING & CONFIRMATION

Refer Page **583**



← MBP006 Hi-Super Speed Sickle Kit

Step 1 - Ready to Use Screening Kit. **Stable at 45°C**

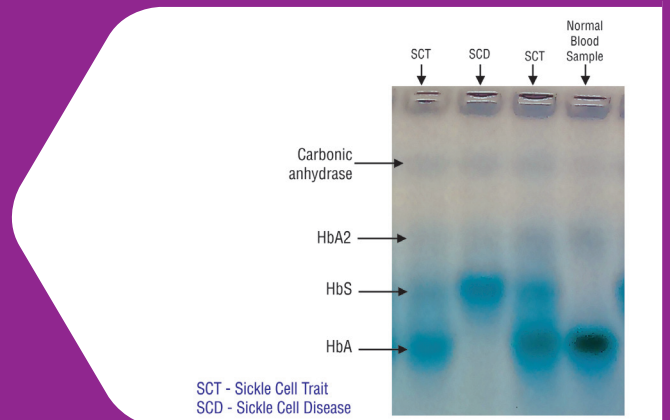


MBP008 →

Alkaline Hemoglobin Electrophoresis Kit

Step 2 - High throughput Alkaline Hb Electrophoresis Confirmatory Test

- High Sensitivity
- Ultra Rapid Staining : 15 mins
- No Destaining Required



SCT - Sickle Cell Trait
SCD - Sickle Cell Disease