

MBT130

100bp DNA Ladder M

Product Name	Product Code	Kit Packing**
100bp DNA Ladder M	MBT130-50LN	50 Lanes (150 µl)
100bp DNA Ladder M	MBT130-200LN	200 Lanes (4 x 150 µl)

**** The product is supplied with a vial of 6X Gel loading Buffer.**

Description:

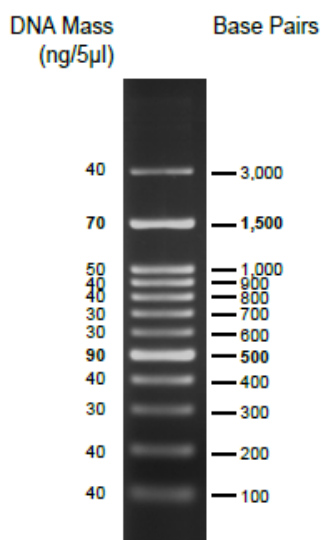
The 100bp DNA ladder consists of 12 double stranded DNA fragments ranging from 100bp to 3000bp in increments; 10 fragments from size 100 to 1000bp with an increment of 100bp and two larger fragments with 1500bp and 3000bp. The amounts of 500 and 1500bp fragments are adjusted, so that their increased intensities upon staining serve as easy references after gel electrophoresis. The ladders are supplied pre-mixed with loading buffer.

Recommended load: 3 µl / lane

Concentration: 108 µg/ml

Storage conditions:

The ladder should be stored at -20°C. When stored under the recommended conditions, the product is stable for 2 years.



Please refer disclaimer Overleaf.

Quality Control:

Each lot of HiMedia's 100bp DNA Ladder M is assayed for contaminating endonuclease, exonuclease and non-specific DNase activities.

Technical Assistance

At HiMedia, we pride ourselves on the quality and availability of our technical support. For any kind of technical assistance, mail to mb@himedialabs.com.



Consult instructions for use



Do not use if package is damaged



HiMedia Laboratories Pvt. Limited,
Reg. Off: 23 Vadhani Industrial Estate,
LBS Marg, Mumbai - 400086,
India Works: B/4-6, M.I.D.C., Dindori,
Nashik, India (or respective plant address)
Customer Care No: 022-6116 9797
www.himedialabs.com

PIMBT130_0/0418 MBT130-01

Disclaimer :

User must ensure suitability of the product(s) in their application prior to use. Products conform solely to the information contained in this and other related HiMedia™ publications. The information contained in this publication is based on our research and development work and is to the best of our knowledge true and accurate. HiMedia™ Laboratories Pvt Ltd reserves the right to make changes to specifications and information related to the products at any time. Products are not intended for human or animal diagnostic or therapeutic use but for laboratory, research or further manufacturing use only, unless otherwise specified. Statements contained herein should not be considered as a warranty of any kind, expressed or implied, and no liability is accepted for infringement of any patents.

HiMedia Laboratories Pvt. Ltd. A-516, Swastik Disha Business Park, Via Vadhani Ind. Est., LBS Marg, Mumbai-400086, India. Customer care No.: 022-6147 1919 Email: techhelp@himedialabs.com Website: www.himedialabs.com