

MBT092

Prestained Protein Ladder

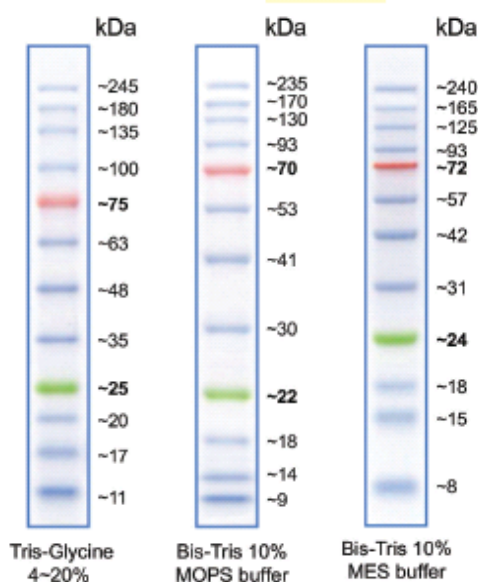
Product Name	Product Code	Kit Packing
Prestained Protein Ladder	MBT092-10LN	10 Lanes (50 µl)
Prestained Protein Ladder	MBT092-100LN	100 Lanes (500 µl)

Description:

The Prestained Protein Ladder is a three-color protein standard with 12 prestained proteins covering a wide range molecular weights from 10 to 245 kDa. Proteins are covalently coupled with a blue chromophore except for two reference bands (one green and one red band at 25 kDa and 75 kDa respectively) when separated on SDS-PAGE (Tris-glycine buffer). The Pre-Stained Protein Ladder is designed for monitoring protein separation during SDS-polyacrylamide gel electrophoresis, verification of Western transfer efficiency on membranes (PVDF, nylon, or nitrocellulose) and for approximating the size of proteins. The ladder is supplied in gel loading buffer and is ready to use.

Recommended load: 5 µl/lane

Storage conditions: The ladder should be stored at -20°C. When stored under the recommended conditions, the product is stable for 2 years.



Quality Control:

Under recommended conditions, Prestained Protein Ladder resolves into 12 major bands in 15% SDS-PAGE (Tris-glycine buffer) and after Western blotting to nitrocellulose membrane.

Note:

Prestained protein ladder bands won't get developed during Enhanced chemiluminescent (ECL) reaction.

Please refer disclaimer Overleaf.

1



Registered Office :

23, Vadhani Industrial Estate, LBS Marg,
Mumbai - 400 086, India.
Tel. : (022) 4017 9797 / 2500 1607
Fax : (022) 2500 2286

Commercial Office

A-516, Swastik Disha Business Park,
Via Vadhani Indl. Est., LBS Marg,
Mumbai - 400 086, India

Tel: 00-91-22-6147 1919
Fax: 6147 1920, 2500 5764
Email : info@himedialabs.com
Web : www.himedialabs.com

Technical Assistance

At HiMedia, we pride ourselves on the quality and availability of our technical support. For any kind of technical assistance, mail to mb@himedialabs.com



Consult instructions for use



Do not use if package is damaged



HiMedia Laboratories Pvt. Limited,
Reg. Off: 23 Vadhani Industrial Estate,
LBS Marg, Mumbai - 400086,
India Works: B/4-6, M.I.D.C., Dindori,
Nashik, India (or respective plant address)
Customer Care No: 022-6116 9797
www.himedialabs.com

PIMBT092_0/0419

MBT092-01

Disclaimer :

User must ensure suitability of the product(s) in their application prior to use. Products conform solely to the information contained in this and other related HiMedia™ publications. The information contained in this publication is based on our research and development work and is to the best of our knowledge true and accurate. HiMedia™ Laboratories Pvt Ltd reserves the right to make changes to specifications and information related to the products at any time. Products are not intended for human or animal diagnostic or therapeutic use but for laboratory, research or further manufacturing use only, unless otherwise specified. Statements contained herein should not be considered as a warranty of any kind, expressed or implied, and no liability is accepted for infringement of any patents.

HiMedia Laboratories Pvt. Ltd. A-516, Swastik Disha Business Park, Via Vadhani Ind. Est., LBS Marg, Mumbai-400086, India. Customer care No.: 022-6147 1919 Email: techhelp@himedialabs.com Website: www.himedialabs.com