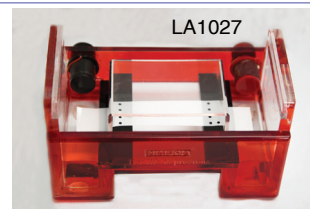


Electrophoresis System

- ▶ Acrylic body
- ▶ Concealed Platinum electrode
- ▶ Sliding safety lid with integral electrode ports
- ▶ Easy gel cast in single unit
- ▶ Furnished design for easy handling

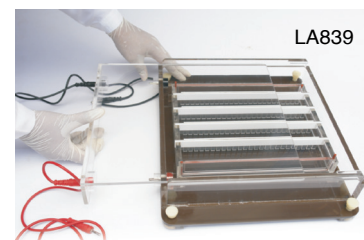
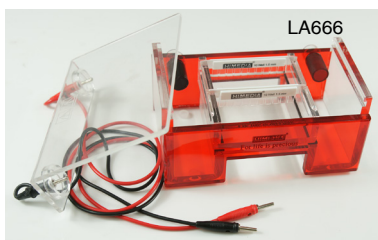
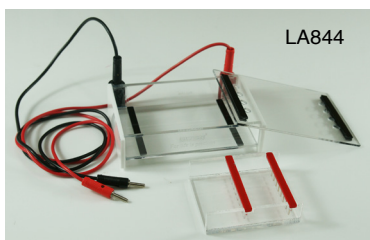
Cellulose Acetate Electrophoresis System New

- ▶ Operating temperature range 4 - 65° C
- ▶ Increased mechanical strength



Horizontal Electrophoresis Apparatus

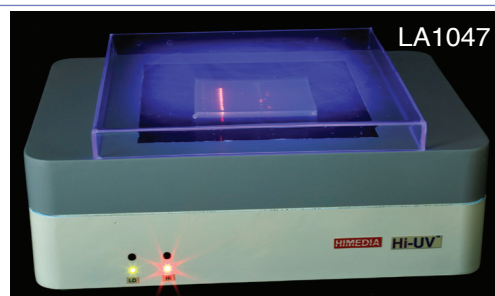
- | | |
|--|-------|
| 1) Hi-Eco Mini Horizontal Gel Box (10.0 x 7.5 cm gel tray. Include two combs of 8 teeth, 1.5mm) | LA844 |
| 2) Hi-Eco Mini Horizontal Electrophoresis kit (Include Hi-Eco Min Horizontal Electrophoresis power supply Gel box) | LA851 |
| 3) Mini Horizontal Gel Box (7x8 cm gel, rapid cast gel tray with two comb slots, include two combs of 6 & 10 teeth, 1.5 mm) | LA665 |
| 4) Mini Horizontal Gel Box (9x11 cm gel, Rapid cast gel tray with two comb slots, include two combs 10 well & 14 well, 1.5 mm) | LA666 |
| 5) 100 wells multichannels compatible horizontal gel box Length : 12" x 12", Height : 2.5" 4 combs each with 25 teeth. | LA839 |



Hi-UV™ Transilluminator New

Long-life, pure quartz filter, highly polished reflectors for uniform illumination

- ▶ 6 X 8W High intensity UV tubes
- ▶ 313nm wavelength
- ▶ maximum gel size 20 X 20 cm



Electrophoresis power supply

- | | |
|---|-------|
| 1) Electrophoresis power supply (2 terminal output) | LA842 |
| 2) Electrophoresis power power | LA690 |



Tabspin™ Micro centrifuge New

Rotor capacity : 12x0.2/0.5/1.5/2.0ml tubes
 Max centrifugal force : 14000 rcf
 Max speed : 14500 rpm
 Time range : 20-99 min 59 sec.
 Noise level : <60 dBA
 Dimension : LxWxH : 212x240x138

