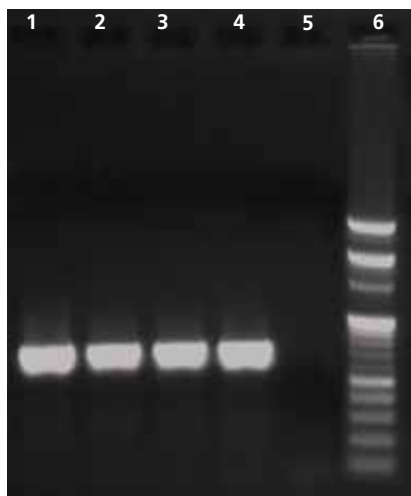




### MBPCR003 - *Vibrio cholerae* Detection Kit



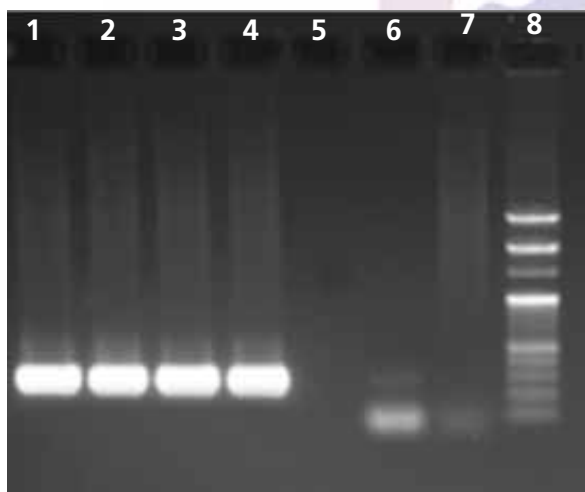
Lane	Sample
1	<i>V. cholerae</i>
2	<i>V. ogawa</i>
3	Hosp. Isolate 1
4	Hosp. Isolate 2
5	-ve control
6	100bp DNA Ladder (MBT049)

#### Specifications

**Sensitivity:** Detectable upto 10-100 CFU / ml (mg) before pre-enrichment.

**Specificity:** 100% exclusivity for about 100 non-target strains.

### MBPCR004 - *Salmonella* Detection Kit



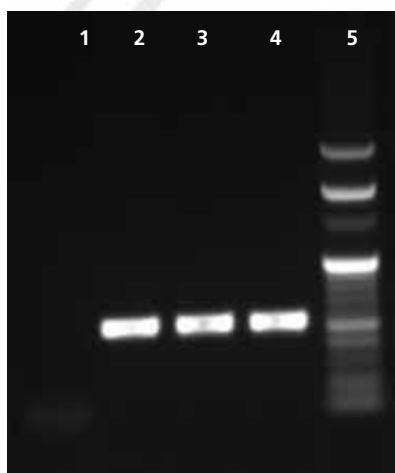
Lane	Sample
1	Salmonella pure culture
2	Salmonella (Clinical isolate)
3	Salmonella (From Juice)
4	Salmonella (From raw meat)
5	-
6	Salmonella (From raw fish)
7	-ve control
8	100bp DNA Ladder (MBT049)

#### Specifications:

**Sensitivity:** Detectable upto 10-100 CFU / ml (mg) before pre-enrichment.

**Specificity:** 100% exclusivity for about 100 non-target strains.

### MBPCR005 - *Listeria monocytogenes* Detection Kit



Lane	Sample
1	-ve control
2	Listeria (Pure Culture)
3	Listeria (Hosp. Isolate 1)
4	Listeria (Hosp. Isolate 2)
5	100 bp DNA Ladder (MBT049)

#### Specifications:

**Sensitivity:** Detectable upto 10-100 CFU / ml (mg) before pre-enrichment.

**Specificity:** 100% exclusivity for about 100 non-target strains.