

**RPA524Hu01 100µg**  
**Recombinant Tissue Factor (TF)**  
**Organism Species: Homo sapiens (Human)**  
***Instruction manual***

FOR IN VITRO USE AND RESEARCH USE ONLY  
NOT FOR USE IN CLINICAL DIAGNOSTIC PROCEDURES

---

12th Edition (Revised in Aug, 2016)

## [ **PROPERTIES** ]

**Source:** Prokaryotic expression.

**Host:** *E. coli*

**Residues:** Gly34~glu251

**Tags:** N-terminal His-Tag

**Tissue Specificity:** Lung, Pancreas, Placenta.

**Subcellular Location:** Membrane; Single-pass type I membrane protein, Secreted.

**Purity:** >98%

**Traits:** Freeze-dried powder

**Buffer formulation:** PBS, pH7.4, containing 1mM DTT, 5% trehalose, 0.01% sarcosyl and Proclin300.

**Original Concentration:** 200µg/mL

**Applications:** Positive Control; Immunogen; SDS-PAGE; WB.

(May be suitable for use in other assays to be determined by the end user.)

**Predicted isoelectric point:** 5.9

**Predicted Molecular Mass:** 26.0kDa

**Accurate Molecular Mass:** 33kDa as determined by SDS-PAGE reducing conditions.

**Phenomenon explanation:**

The possible reasons that the actual band size differs from the predicted are as follows:

1. Splice variants: Alternative splicing may create different sized proteins from the same gene.
2. Relative charge: The composition of amino acids may affects the charge of the protein.
3. Post-translational modification: Phosphorylation, glycosylation, methylation etc.
4. Post-translation cleavage: Many proteins are synthesized as pro-proteins, and then cleaved to give the active form.
5. Polymerization of the target protein: Dimerization, multimerization etc.

## [ **USAGE** ]

Reconstitute in PBS (pH7.4) to a concentration of 0.1-1.0 mg/mL. Do not vortex.

## [ STORAGE AND STABILITY ]

**Storage:** Avoid repeated freeze/thaw cycles.

Store at 2-8°C for one month.

Aliquot and store at -80°C for 12 months.

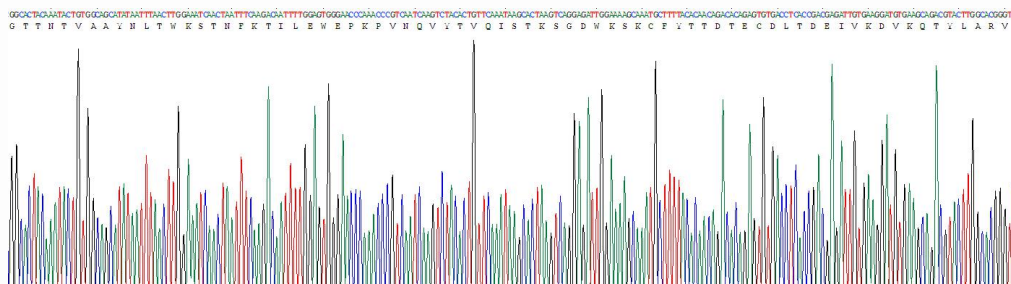
**Stability Test:** The thermal stability is described by the loss rate. The loss rate was determined by accelerated thermal degradation test, that is, incubate the protein at 37°C for 48h, and no obvious degradation and precipitation were observed. The loss rate is less than 5% within the expiration date under appropriate storage condition.

## [ SEQUENCE ]

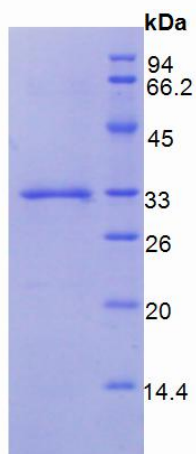
```

                                GTTNTVA AYNLTWKSTN
FKTILEWEPK PVNQVYTVQI STKSGDWKSK CFYTTDTECD LTDEIVKDKV
QTYLARVFSY PAGNVESTGS AGEPLYENSP EFTPYLETNL GQPTIQSFEQ
VGTKVNVTV DERTLVRNN TFLSLRDVFG KDLIYTLYYW KSSSSGKKTA
KTNTNEFLID VDKGENYCFS VQAVIPSRTV NRKSTDSPVE CMGQEKGEFR
E
    
```

## [ IDENTIFICATION ]



**Figure 1. Gene Sequencing (Extract)**



**Figure 2. SDS-PAGE**