

RPB495Ra01 100µg
Recombinant Sorbitol Dehydrogenase (SDH)
Organism Species: *Rattus norvegicus* (Rat)
Instruction manual

FOR RESEARCH USE ONLY
NOT FOR USE IN CLINICAL DIAGNOSTIC PROCEDURES

12th Edition (Revised in Aug, 2016)

[PROPERTIES]

Source: Prokaryotic expression

Host: *E.coli*

Residues: Ala2~Pro357

Tags: N-terminal His Tag

Subcellular Location: Membrane

Purity: > 97%

Traits: Freeze-dried powder

Buffer formulation: 20mM Tris, 150mM NaCl, pH8.0, containing 0.01% SKL, 5% Trehalose.

Original Concentration: 200µg/mL

Applications: Positive Control; Immunogen; SDS-PAGE; WB.

(May be suitable for use in other assays to be determined by the end user.)

Predicted isoelectric point: 7.3

Predicted Molecular Mass: 41.8kDa

Accurate Molecular Mass: 42kDa as determined by SDS-PAGE reducing conditions.

[USAGE]

Reconstitute in 20mM Tris, 150mM NaCl (pH8.0) to a concentration of 0.1-1.0 mg/mL. Do not vortex.

[STORAGE AND STABILITY]

Storage: Avoid repeated freeze/thaw cycles.

Store at 2-8°C for one month.

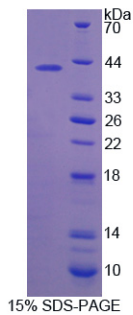
Aliquot and store at -80°C for 12 months.

Stability Test: The thermal stability is described by the loss rate. The loss rate was determined by accelerated thermal degradation test, that is, incubate the protein at 37°C for 48h, and no obvious degradation and precipitation were observed. The loss rate is less than 5% within the expiration date under appropriate storage condition.

[SEQUENCE]

AAPAKGENL SLVVHGPDI RLENYPIPEL GPNDVLLKMH SVGICGSDVH
YWEHGRIGDF VVKKPMVLGH EAAGTVTKVG PMVKHLKPGD RVAIEPGVPR
EIDEFCKIGR YNLTPSIFFC ATPPDDGNLC RFYKHSADFC YKLPDSVTFE
EGALIEPLSV GIYACRRGSV SLGNKVLVCG AGPIGIVTLL VAKAMGASQV
VVIDLSASRL AKAKEVGADF TIQVAKETPH DIAKKVESVL GSKPEVTIEC
TGAESSVQTG IYATHSGGTL VVVGMPPEMI NLPLVHA AVR EVDIKGVFRY
CNTWPMVAVSM LASKTLNVKP LVTHRFPLEK AVEAFETAKK GLGLKVMIKC
DPNDQNP

[IDENTIFICATION]



[IMPORTANT NOTE]

The kit is designed for research use only, we will not be responsible for any issue if the kit was used in clinical diagnostic or any other procedures.