

RPA099Hu01 50µg

Recombinant Matrix Metalloproteinase 13 (MMP13)

Organism Species: Homo sapiens (Human)

Instruction manual

FOR IN VITRO USE AND RESEARCH USE ONLY

NOT FOR USE IN CLINICAL DIAGNOSTIC PROCEDURES

11th Edition (Revised in May, 2016)

[PROPERTIES]

Source: Prokaryotic expression.

Host: *E. coli*

Residues: Glu103~Leu290

Tags: N-terminal His-Tag

Tissue Specificity: Breast Cancer.

Subcellular Location: Secreted, extracellular space, extracellular matrix.

Purity: >98%

Traits: Freeze-dried powder

Buffer formulation: PBS, pH7.4, containing 1mM DTT, 5% trehalose, 0.01% sarcosyl and Proclin300.

Original Concentration: 200ug/mL

Applications: SDS-PAGE; WB; ELISA; IP; CoIP; Purification; Amine Reactive Labeling.

(May be suitable for use in other assays to be determined by the end user.)

Predicted isoelectric point: 5.7

Predicted Molecular Mass: 22.3kDa

Accurate Molecular Mass: 25kDa as determined by SDS-PAGE reducing conditions.

[USAGE]

Reconstitute in PBS (pH7.4) to a concentration of 0.1-1.0 mg/mL. Do not vortex.

[**STORAGE AND STABILITY**]

Storage: Avoid repeated freeze/thaw cycles.

Store at 2-8°C for one month.

Aliquot and store at -80°C for 12 months.

Stability Test: The thermal stability is described by the loss rate. The loss rate was determined by accelerated thermal degradation test, that is, incubate the protein at 37°C for 48h, and no obvious degradation and precipitation were observed. The loss rate is less than 5% within the expiration date under appropriate storage condition.

[**SEQUENCE**]

```
EYNVFPRT LKWSKMNLTY RIVNYTPDMT HSEVEKAFKK AFKVWSDVTP
LNFTRLHDGI ADIMISFGIK EHGDFYPFDG PSGLLAHAFP PGPNYGGDAH
FDDDETWTSS SKGYNLFLVA AHEFGHSLGL DSKDPGALM FPIYTYTGKS
HFMLPDDDVQ GIQSLYGPGD EDPNPKHPKT PDKCDPSLSL
```

[**IDENTIFICATION**]

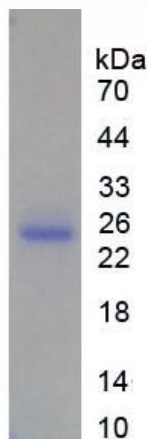


Figure 1. SDS-PAGE