

**RPA011Ca01 10µg**  
**Recombinant Brain Derived Neurotrophic Factor (BDNF)**  
**Organism Species: *Canis familiaris*; Canine (Dog)**  
***Instruction manual***

FOR RESEARCH USE ONLY  
NOT FOR USE IN CLINICAL DIAGNOSTIC PROCEDURES

---

12th Edition (Revised in Aug, 2016)

**[ PROPERTIES ]**

**Source:** Prokaryotic expression

**Host:** *E.coli*

**Residues:** Arg128~Ile243

**Tags:** N-terminal His Tag

**Subcellular Location:** Secreted

**Purity:** > 90%

**Traits:** Freeze-dried powder

**Buffer formulation:** 100mMNaHCO<sub>3</sub>, 500mMNaCl, pH8.3, containing 0.01% SKL, 5% Trehalose.

**Original Concentration:** 200µg/mL

**Applications:** Positive Control; Immunogen; SDS-PAGE; WB.

(May be suitable for use in other assays to be determined by the end user.)

**Predicted isoelectric point:** 9.3

**Predicted Molecular Mass:** 14.4kDa

**Accurate Molecular Mass:** 17kDa as determined by SDS-PAGE reducing conditions.

**[ USAGE ]**

Reconstitute in 100mM NaHCO<sub>3</sub>, 500mM NaCl (pH8.3) to a concentration of 0.1-1.0 mg/mL. Do not vortex.

**[ STORAGE AND STABILITY ]**

**Storage:** Avoid repeated freeze/thaw cycles.

Store at 2-8°C for one month.

Aliquot and store at -80°C for 12 months.

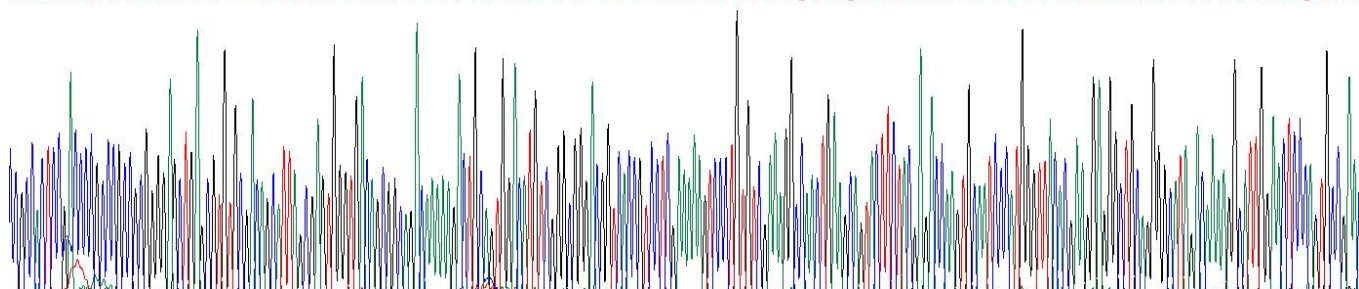
**Stability Test:** The thermal stability is described by the loss rate. The loss rate was determined by accelerated thermal degradation test, that is, incubate the protein at 37°C for 48h, and no obvious degradation and precipitation were observed. The loss rate is less than 5% within the expiration date under appropriate storage condition.

**[ SEQUENCE ]**

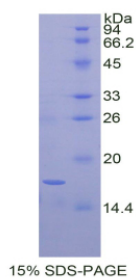
RHS DPARRGELSV CDSISEWTA  
ADKKTAVDMS GGTVTVLEKV PVSKGQLKQY FYETKCNPMG YKKEGCRGID  
KRHWNSQCRT TQSYVRALTM DSKKRIGWRF IRIDTSCVCT LTI

**[ IDENTIFICATION ]**

D G D C T O G A C C C C G C C C G C C T G A C G T G C G A C G C A T T A G C G T G G C C G C A C G C G G C G C A C A A G A C T G C A G T G G A C A T G T C G G G C G G C G G C G C G T C C G T C T G A A A A G T C C T G T G A A G C C A C T G A G C G T C T T C T C G A G C A C A G T C G A T C C A T T G G T T A C G A G G G C G C C G G C C T A G C A A G G C A T T G A C T C C G C G T G C G A C  
R H S D P A R R G E L S V C D S I S E W V T A A D K K T A V D M S G G T V T V L E K V P V S K G Q L K Q Y F Y E T K C N P M G Y T K E G C R G I D K R H W N S Q C R T



**Figure. Gene Sequencing (Extract)**



**[ IMPORTANT NOTE ]**

The kit is designed for research use only, we will not be responsible for any issue if the kit was used in clinical diagnostic or any other procedures.