

MAA080Si21

**Monoclonal Antibody to Interleukin 8 (IL8)
Organism Species: Rhesus monkey (Simian)**

Instruction manual

**FOR IN VITRO USE AND RESEARCH USE ONLY
NOT FOR USE IN CLINICAL DIAGNOSTIC PROCEDURES**

12th Edition (Revised in Aug, 2016)

[PROPERTIES]

Source: Monoclonal antibody preparation

Host: Mouse

Antibody isotype: IgG2b Kappa

Purification: Protein A/G Affinity Chromatography.

Clone number: C1

Traits: Liquid

Concentration: 500µg/mL

UOM: 200µg

Applications: WB; IHC; ICC; IP.

[IMMUNOGEN]

Immunogen: Recombinant IL8 (Ala23~Pro101) expressed in *E.coli*.

Accession No.: RPA080Si01

[APPLICATIONS]

Western blotting: 0.5-5µg/mL

Immunohistochemistry: 5-30µg/mL

Immunocytochemistry: 5-30µg/mL

Optimal working dilutions must be determined by end user.

[FORMULATION]

Form & Buffer: Supplied as solution form in 0.01M PBS, pH7.4, containing 0.05% Proclin-300, 50% glycerol.

[QUALITY CONTROL]

Content: The quality control contains recombinant IL8 disposed in loading buffer.

Usage: 10uL per well when 3,3'-Diaminobenzidine (DAB) as the substrate.
5uL per well when used in enhanced chemiluminescent (ECL).

Note: The quality control is specifically manufactured as the positive control.
Not used for other purposes.

Loading Buffer: 100mM Tris(pH6.8), 1% SDS, 150mM NaCl, 50% glycerol, 0.02% BPB, 50mM DTT and 0.02% NaN₃.

[STORAGE AND STABILITY]

Storage: Avoid repeated freeze/thaw cycles.

Store at 4°C for frequent use.

Aliquot and store at -20°C for 12 months.

Stability Test: The thermal stability is described by the loss rate. The loss rate was determined by accelerated thermal degradation test, that is, incubate the protein at 37°C for 48h, and no obvious degradation and precipitation were observed. The loss rate is less than 5% within the expiration date under appropriate storage condition.

[IDENTIFICATION]

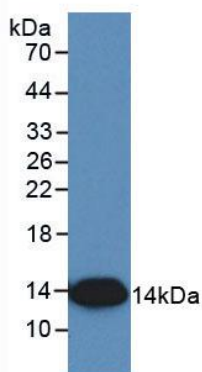


Figure 1. Western Blot

Sample: Recombinant IL8, Simian

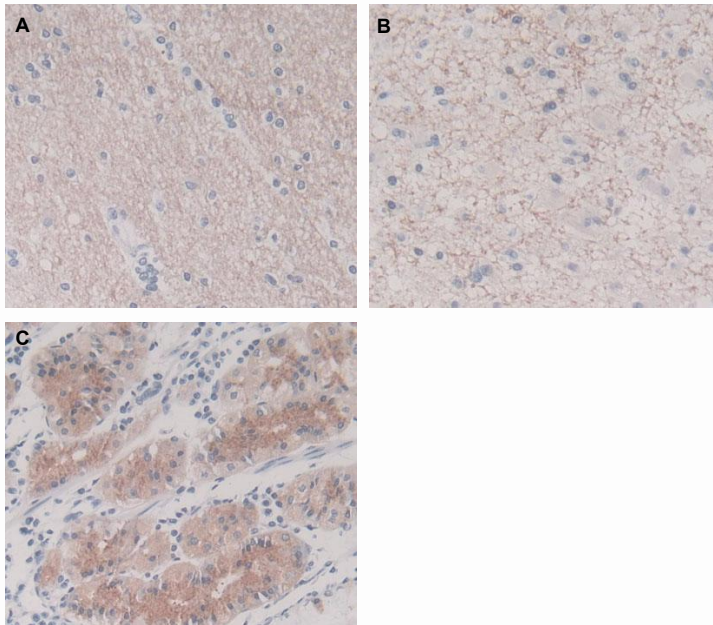


Figure2. DAB staining on IHC-P

Samples:

- A. Human Brain Tissue**
- B. Human Glioma Tissue**
- C. Human Stomach Tissue**