



MAA821Hu22

Monoclonal Antibody to C Reactive Protein (CRP)

Organism Species: Homo sapiens (Human)

Instruction manual

FOR IN VITRO USE AND RESEARCH USE ONLY
NOT FOR USE IN CLINICAL DIAGNOSTIC PROCEDURES

12th Edition (Revised in Aug, 2016)

[PROPERTIES]

Source: Monoclonal antibody preparation

Host: Mouse

Antibody isotype: IgG1 Kappa

Purification: Protein A/G Affinity Chromatography.

Clone number: D10

Traits: Liquid

Concentration: 500µg/mL

UOM: 50µg

Applications: WB; IHC; ICC; IP.

[IMMUNOGEN]

Immunogen: Recombinant CRP (Phe17~Pro224) expressed in *E.coli*.

Accession No.: RPA821Hu01

[APPLICATIONS]

Western blotting: 0.5-5µg/mL

Immunohistochemistry: 5-30µg/mL

Immunocytochemistry: 5-30µg/mL

Optimal working dilutions must be determined by end user.

[FORMULATION]

Form & Buffer: Supplied as solution form in 0.01M PBS, pH7.4, containing 0.05% Proclin-300, 50% glycerol.

[STORAGE AND STABILITY]

Storage: Avoid repeated freeze/thaw cycles.

Store at 4°C for frequent use.

Aliquot and store at -20°C for 12 months.

Stability Test: The thermal stability is described by the loss rate. The loss rate was determined by accelerated thermal degradation test, that is, incubate the

protein at 37°C for 48h, and no obvious degradation and precipitation were observed. The loss rate is less than 5% within the expiration date under appropriate storage condition.

[IDENTIFICATION]

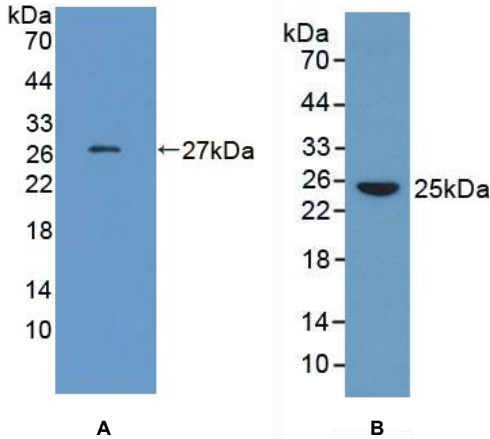


Figure 1. Western Blot

A. Sample: Recombinant CRP, Human

B. Human Serum

Primary Ab: 2µg/mL Mouse Anti-Human CRP Ab

Second Ab: 1:5000 Dilution of HRP-Linked Rabbit

Anti-Mouse IgG Ab (Catalog: SAA544Mu09)

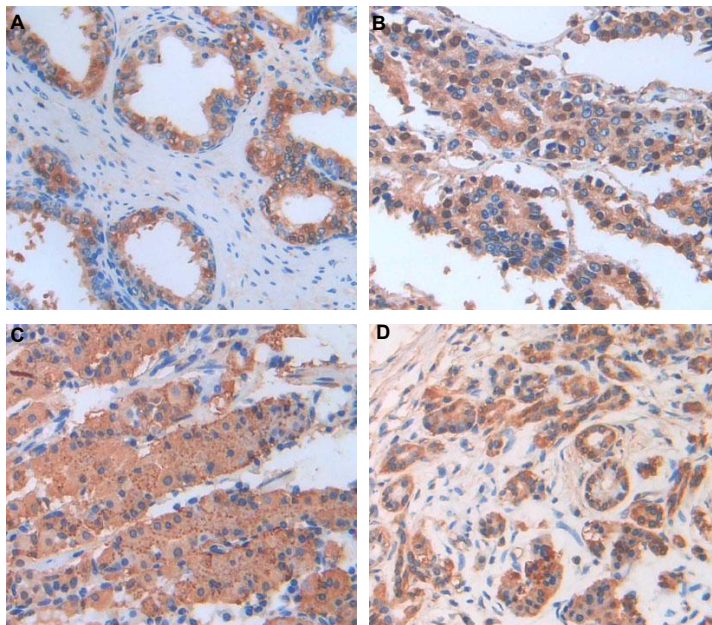


Figure2. DAB staining on IHC-P

Samples:

- A. Human Prostate Gland Tissue**
- B. Human Prostate Gland Cancer Tissue**
- C. Human Stomach Tissue**
- D. Human Pancreas Cancer Tissue**