

APA120Mu01 50µg
Active Stem Cell Factor (SCF)
Organism Species: *Mus musculus (Mouse)*
Instruction manual

FOR RESEARCH USE ONLY
NOT FOR USE IN CLINICAL DIAGNOSTIC PROCEDURES

1th Edition (Apr, 2016)

[PROPERTIES]

Source: Prokaryotic expression.

Host: *E. coli*

Residues: Lys24~Ala247

Tags: N-terminal His-tag

Purity: >98%

Buffer Formulation: 10mM PBS, pH7.4, containing 5% trehalose 0.01% sarcosyl and Proclin300.

Applications: Cell culture; Activity Assays.

(May be suitable for use in other assays to be determined by the end user.)

Predicted isoelectric point: 7.1

Predicted Molecular Mass: 26.0kDa

Accurate Molecular Mass: 20kDa as determined by SDS-PAGE reducing conditions.

Phenomenon explanation:

The possible reasons that the actual band size differs from the predicted are as follows:

1. Splice variants: Alternative splicing may create different sized proteins from the same gene.
2. Relative charge: The composition of amino acids may affects the charge of the protein.
3. Post-translational modification: Phosphorylation, glycosylation, methylation etc.
4. Post-translation cleavage: Many proteins are synthesized as pro-proteins, and then cleaved to give the active form.
5. Polymerization of the target protein: Dimerization, multimerization etc.

[USAGE]

Reconstitute in 10mM PBS (pH7.4) to a concentration of 0.1-1.0 mg/mL. Do not vortex.

[STORAGE AND STABILITY]

Storage: Avoid repeated freeze/thaw cycles.

Store at 2-8°C for one month.

Aliquot and store at -80°C for 12 months.

Stability Test: The thermal stability is described by the loss rate. The loss rate was determined by accelerated thermal degradation test, that is, incubate the protein at 37°C for 48h, and no obvious degradation and precipitation were observed. The loss rate is less than 5% within the expiration date under appropriate storage condition.

[SEQUENCE]

```
KTKEICG NPVTDNVKDI TKLVANLPND
YMITLNYVAG MDVLPSHCWL RDMVIQLSLS LTTLLDKFSN ISEGLSNYSI
IDKLGKIVDD LVLCEENAP KNIKESPKRP ETRSFTPEEF FSIFNRSIDA
FKDFMVASDT SDCVLSSTLG PEKDSRVSVT KPFMLPPVAA SSLRNDSSSS
NRKAAKAPED SGLQWTAMAL PALISLVIGF AFGALYWKKK QSSLTRA
```

[ACTIVITY]

Stem cell factor (also known as SCF, KIT-ligand, KL, or steel factor) is a cytokine that binds to the c-KIT receptor (CD117). SCF can exist both as a transmembrane protein and a soluble protein. This cytokine plays an important role in hematopoiesis (formation of blood cells), spermatogenesis, and melanogenesis. SCF has been shown to stimulate the proliferation of Raw264.7 cells. To test this effect, Raw264.7 cells were seeded into triplicate wells of 96-well plates at a density of 2,000 cells/well and allowed to attach later, replaced with serum-free overnight, then the medium was replaced with 2% serum standard DMEM containing various concentrations of recombinant mouse SCF. After

incubated for 120h, cells were observed by inverted microscope and cell proliferation was measured by Cell Counting Kit-8 (CCK-8). Briefly, 10 μ L of CCK-8 solution was added to each well of the plate, then the absorbance at 450nm was measured using a microplate reader after incubating the plate for 1-4 hours at 37°C. Proliferation of Raw264.7 cells after incubation with SCF for 120h observed by inverted microscope was shown in Figure 1. Cell viability was assessed by CCK-8 (Cell Counting Kit-8) assay after incubation with recombinant SCF for 120h. The result was shown in Figure 2. It was obvious that SCF significantly increased cell viability of Raw264.7 cells.

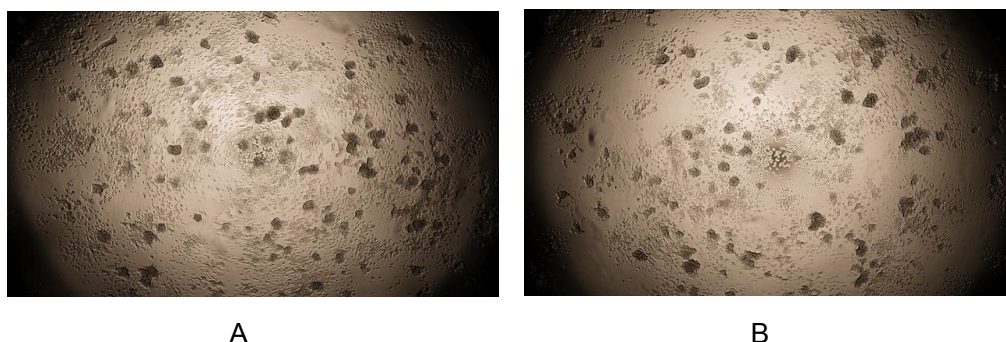


Figure 1. Cell proliferation of Raw264.7 cells after stimulated with SCF.

(A) Raw264.7 cells cultured in DMEM, stimulated with 1ng/mL SCF for 120h;

(B) Unstimulated Raw264.7 cells cultured in DMEM for 120h.

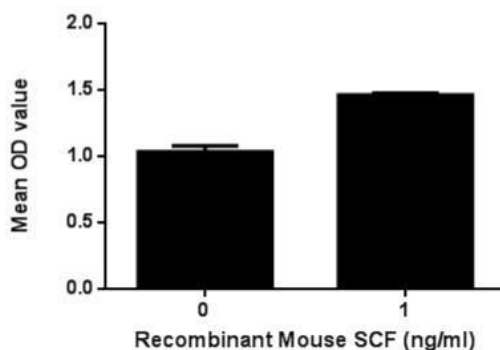


Figure 2. Cell proliferation of Raw264.7 cells after stimulated with SCF.

[IDENTIFICATION]

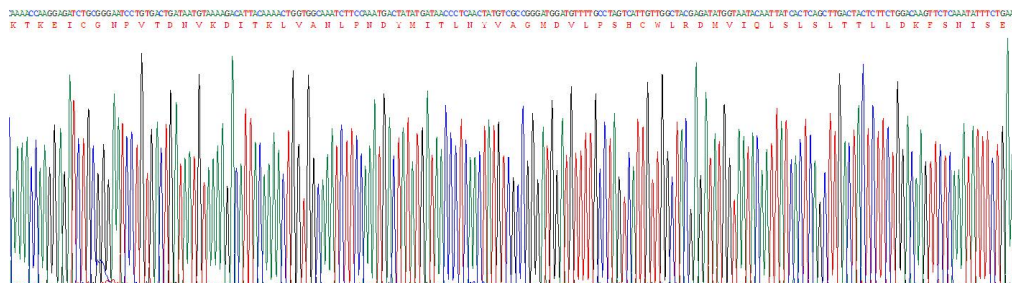


Figure 3. Gene Sequencing (extract)

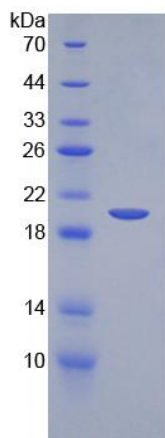


Figure 4. SDS-PAGE

Sample: Active recombinant SCF, Mouse

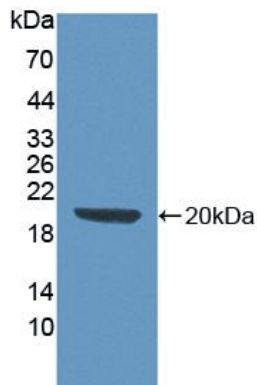


Figure 5. Western Blot

Sample: Recombinant SCF, Mouse;

Antibody: Rabbit Anti-Mouse SCF Ab (PAA120Mu01)

[IMPORTANT NOTE]

The kit is designed for in vitro and research use only, we will not be responsible for any issue if the kit was used in clinical diagnostic or any other procedures.