

## LMO2 Ab

Cat.#: BF0023  
Size: 50ul,100ul,200ul

Concn.: 1mg/ml  
Source: Mouse

Mol.Wt.: 18.4kDa  
Clonality: Monoclonal

|                               |  |
|-------------------------------|--|
| Application:                  | ELISA 1/10000, WB 1/500 - 1/2000, FCM 1/200 - 1/400  |
| Reactivity:                   | Human  |
| Purification:                 | Affinity-chromatography.   |
| Specificity:                  | LMO2 Ab detects endogenous levels of total LMO2.   |
| Immunogen:                    | Purified recombinant fragment of human LMO2 expressed in E. Coli.  |
| Uniprot:                      | P25791   |
| Description:                  | LMO2 encodes a cysteine-rich, two LIM-domain protein that is required for yolk sac erythropoiesis. The LMO2 protein has a central and crucial role in hematopoietic development and is highly conserved.     |
| Subcellular Location:         | Nucleus.   |
| Similarity:                   | The second LIM zinc-binding domain interacts with KDM5A.   |
| Storage Condition and Buffer: | Mouse IgG1 in phosphate buffered saline (without Mg <sup>2+</sup> and Ca <sup>2+</sup> ), pH 7.4, 150mM NaCl, 0.02% sodium azide and 50% glycerol.Store at -20 °C.Stable for 12 months from date of receipt. |

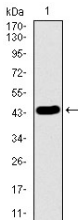


Figure 1: Western blot analysis using LMO2 mAb against human LMO2 recombinant protein. (Expected MW is 43.9 kDa)

**IMPORTANT:** For western blot, incubate membrane with diluted primary Ab in 5% w/v milk , 1X TBS, 0.1% Tween@20 at 4°C with gentle shaking, overnight.

For Research Use Only. Not for use in diagnostic and therapeutic procedures. Not for resale without express authorization.