

KRT19 Ab

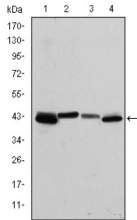
Cat.#: BF0497
Size: 50ul,100ul,200ul

Concn.: 1mg/ml
Source: Mouse

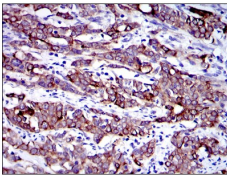
Mol.Wt.: 41kDa
Clonality: Monoclonal

Application:	ELISA 1/10000, WB 1/500 - 1/2000, IHC 1/200 - 1/1000, ICC 1/200 - 1/1000
Reactivity:	Human
Purification:	Affinity-chromatography.
Specificity:	KRT19 Ab detects endogenous levels of total KRT19.
Immunogen:	Purified recombinant fragment of human KRT19 expressed in E. Coli.
Uniprot:	P08727
Description:	The protein encoded by this gene is a member of the keratin family. The keratins are intermediate filament proteins responsible for the structural integrity of epithelial cells and are subdivided into cytokeratins and hair keratins. The type I cytokeratins consist of acidic proteins which are arranged in pairs of heterotypic keratin chains. Unlike its related family members, this smallest known acidic cytokeratin is not paired with a basic cytokeratin in epithelial cells. It is specifically expressed in the periderm, the transiently superficial layer that envelops the developing epidermis. The type I cytokeratins are clustered in a region of chromosome 17q12-q21.
Tissue Specificity:	Expressed in a defined zone of basal keratinocytes in the deep outer root sheath of hair follicles. Also observed in sweat gland and mammary gland ductal and secretory cells, bile ducts, gastrointestinal tract, bladder urothelium, oral epithelia, esophagus, ectocervical epithelium (at protein level). Expressed in epidermal basal cells, in nipple epidermis and a defined region of the hair follicle. Also seen in a subset of vascular wall cells in both the veins and artery of human umbilical cord, and in umbilical cord vascular smooth muscle. Observed in muscle fibers accumulating in the costameres of myoplasm at the sarcolemma in structures that contain dystrophin and spectrin.
Similarity:	This keratin differs from all other IF proteins in lacking the C-terminal tail domain.Belongs to the intermediate filament family.
Storage Condition and Buffer:	Mouse IgG1 in phosphate buffered saline (without Mg ²⁺ and Ca ²⁺), pH 7.4, 150mM NaCl, 0.02% sodium azide and 50%

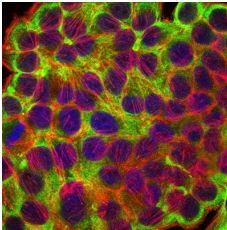
glycerol.Store at -20 °C.Stable for 12 months from date of receipt.



Western blot analysis using KRT19 mouse mAb against T47D (1), MCF-7 (2), HepG2 (3) and SW620 (4) cell lysate.)



Immunohistochemical analysis of paraffin-embedded human cervical cancer tissues using KRT19 mouse mAb with DAB staining.



Immunofluorescence analysis of HepG2 cells using KRT19 mouse mAb (green). Blue: DRAQ5 fluorescent DNA dye. Red: Actin filaments have been labeled with Alexa Fluor-555 phalloidin.

IMPORTANT: For western blot, incubate membrane with diluted primary Ab in 5% w/v milk , 1X TBS, 0.1% Tween@20 at 4°C with gentle shaking, overnight.

For Research Use Only. Not for use in diagnostic and therapeutic procedures. Not for resale without express authorization.