

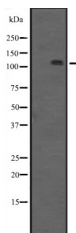
## PRKD3 Ab

Cat.#: DF2674  
Size: 100ul,200ul

Concn.: 1mg/ml  
Source: Rabbit

Mol.Wt.: 107 kDa;  
Clonality: Polyclonal

Application:	WB 1:500-1:2000
Reactivity:	Human,Mouse,Rat
Purification:	The antiserum was purified by peptide affinity chromatography using SulfoLink™ Coupling Resin (Thermo Fisher Scientific).
Specificity:	PRKD3 Ab detects endogenous levels of total PRKD3.
Immunogen:	A synthesized peptide.
Uniprot:	O94806
Description:	Converts transient diacylglycerol (DAG) signals into prolonged physiological effects, downstream of PKC. Involved in resistance to oxidative stress.;
Subcellular Location:	Cytoplasm. Membrane. Translocation to the cell membrane is required for kinase activation.
Tissue Specificity:	Ubiquitous.
Similarity:	Belongs to the protein kinase superfamily. CAMK Ser/Thr protein kinase family. PKD subfamily.
Storage Condition and Buffer:	Rabbit IgG in phosphate buffered saline, pH 7.4, 150mM NaCl, 0.02% sodium azide and 50% glycerol.



Western blot analysis of PRKD3 expression in HEK293 cells ,The lane on the left was treated with the antigen-specific peptide.

**IMPORTANT:** For western blot, incubate membrane with diluted primary Ab in 5% w/v milk , 1X TBS, 0.1% Tween@20 at 4°C with gentle shaking, overnight.