

## ODC1 Ab

Cat.#: DF6712  
Size: 100ul,200ul

Concn.: 1mg/ml  
Source: Rabbit

Mol.Wt.: 51kDa  
Clonality: Polyclonal

Application: WB 1:500-1:2000 IHC 1:50-1:200

Reactivity: Human,Mouse,Rat

Purification: The antiserum was purified by peptide affinity chromatography using SulfoLink™ Coupling Resin (Thermo Fisher Scientific).

Specificity: ODC1 Ab detects endogenous levels of total ODC1.

Immunogen: A synthesized peptide derived from human ODC1.

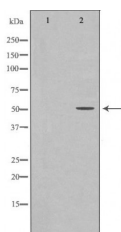
Uniprot: P11926

Description: Ornithine decarboxylase (ODC) is also named as ODC1 and belongs to the Orn/Lys/Arg decarboxylase class-II family. It catalyzes the conversion of ornithine to putrescine, the first step and a major site of regulation of polyamine biosynthesis. The level of ODC is known to be controlled at several sites, namely transcription, translation, and enzyme degradation. Polyamines can stimulate the degradation of ODC as a type of negative feedback control(PMID:8486633). This protein can be phosphorylated in vivo(PMID:8798774). This antibody is specific to ODC1.

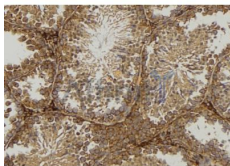
Tissue Specificity: Down-regulated in response to enterovirus 71 (EV71) infection (at protein level).

Similarity: Belongs to the Orn/Lys/Arg decarboxylase class-II family.

Storage Condition and Buffer: Rabbit IgG in phosphate buffered saline , pH 7.4, 150mM NaCl, 0.02% sodium azide and 50% glycerol.Store at -20 °C.Stable for 12 months from date of receipt.



Western blot analysis of Hela whole cell lysates, using ODC1 Ab. The lane on the left was treated with the antigen-specific peptide.



DF6712 at 1/100 staining Mouse testis tissue by IHC-P. The sample was formaldehyde fixed and a heat mediated antigen retrieval step in citrate buffer was performed. The sample was then blocked and incubated with the Ab for 1.5 hours at 22°C. An HRP conjugated goat anti-rabbit Ab was used as the secondary.

**IMPORTANT:** For western blot, incubate membrane with diluted primary Ab in 5% w/v milk , 1X TBS, 0.1% Tween@20 at 4°C with gentle shaking, overnight.

For Research Use Only. Not for use in diagnostic and therapeutic procedures. Not for resale without express authorization.