

## Metadherin Ab

Cat.#: BF0508  
Size: 50ul,100ul,200ul

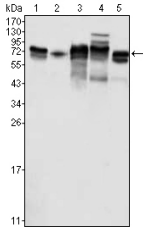
Concn.: 1mg/ml  
Source: Mouse

Mol.Wt.: 64kDa  
Clonality: Monoclonal

Application:	ELISA 1/10000, WB 1/500 - 1/2000, IHC 1/200 - 1/1000, FCM 1/200 - 1/400
Reactivity:	Human
Purification:	Affinity-chromatography.
Specificity:	Metadherin Ab detects endogenous levels of total Metadherin.
Immunogen:	Purified recombinant fragment of human Metadherin expressed in E. Coli.
Uniprot:	Q86UE4
Description:	Metadherin (Metastasis adhesion protein), also known as MTDH, LYsine-Rich CEACAM1 co-isolated (LYRIC), is a novel protein that localizes with the tight junction proteins ZO-1 and occludin in polarized epithelial cells. At the tight junction, it acts not as a structural component, but is rather recruited during the maturation of the tight junction complex. Metadherin is overexpressed in breast cancer tissue and breast tumor xenografts, while much lower levels are expressed in normal breast tissue. Metadherin binds to lung vasculature, one of the four common sites of breast cancer metastasis, through a C-terminal segment in the extracellular domain; blocking this lung-homing domain with antibodies or inhibiting metadherin with siRNA has been reported to inhibit breast cancer metastasis.
Subcellular Location:	Endoplasmic reticulum membrane. Nucleus membrane. Cell junction > tight junction. Nucleus > nucleolus. Cytoplasm > perinuclear region. In epithelial cells, recruited to tight junctions (TJ) during the maturation of the TJ complexes. A nucleolar staining may be due to nuclear targeting of an isoform lacking the transmembrane domain (By similarity). TNF-alpha causes translocation from the cytoplasm to the nucleus.
Tissue Specificity:	Widely expressed with highest levels in muscle-dominating organs such as skeletal muscle, heart, tongue and small intestine and in endocrine glands such as thyroid and adrenal gland. Overexpressed in various cancers including breast, brain, prostate, melanoma and glioblastoma multiforme.

**Storage Condition and Buffer:**

Mouse IgG1 in phosphate buffered saline (without Mg<sup>2+</sup> and Ca<sup>2+</sup>), pH 7.4, 150mM NaCl, 0.02% sodium azide and 50% glycerol. Store at -20 °C. Stable for 12 months from date of receipt.



**Figure 1:** Western blot analysis using Metadherin mouse mAb against K562 (1), SKBR-3 (2), T47D (3), HeLa (4) and MCF-7 (5) cell lysate.

**IMPORTANT:** For western blot, incubate membrane with diluted primary Ab in 5% w/v milk, 1X TBS, 0.1% Tween@20 at 4°C with gentle shaking, overnight.

For Research Use Only. Not for use in diagnostic and therapeutic procedures. Not for resale without express authorization.