

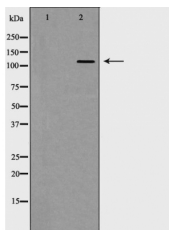
GRM5 Ab

Cat.#: AF5243
Size: 100ul,200ul

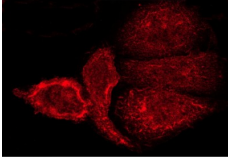
Concn.: 1mg/ml
Source: Rabbit

Mol.Wt.: 130 kDa
Clonality: Polyclonal

Application:	WB 1:500-1:2000 IF 1:100-1:500
Reactivity:	Human,Mouse,Rat
Purification:	The antiserum was purified by peptide affinity chromatography using SulfoLink™ Coupling Resin (Thermo Fisher Scientific).
Specificity:	GRM5 Ab detects endogenous levels of total GRM5.
Immunogen:	A synthesized peptide derived from human GRM5.
Uniprot:	P41594
Description:	Glutamate receptors constitute the principal excitatory neurotransmitter receptors in brain. Two classes of glutamate receptors exist: Ionotropic receptors, and metabotropic receptors (mGluRs). Ionotropic glutamate receptors are oligomeric complexes of various subunits (GluR1 7, NMDA1 3, KAI 2) which comprise ligand gated calcium channels.
Subcellular Location:	Cell membrane.
Similarity:	Belongs to the G-protein coupled receptor 3 family.
Storage Condition and Buffer:	Rabbit IgG in phosphate buffered saline , pH 7.4, 150mM NaCl, 0.02% sodium azide and 50% glycerol.Store at -20 °C.Stable for 12 months from date of receipt.



Western blot analysis of GRM5 expression in HT-29 cells,The lane on the left was treated with the antigen-specific peptide.



AF5243 staining A-431 cells by ICC/IF. Cells were fixed with PFA and permeabilized in 0.1% saponin prior to blocking in 10% serum for 45 minutes at 37°C. The primary Ab was diluted 1/200 and incubated with the sample for 1 hour at 37°C. A Alexa Fluor 594 conjugated goat polyclonal to rabbit IgG (H+L), diluted 1/600 was used as secondary Ab.

IMPORTANT: For western blot, incubate membrane with diluted primary Ab in 5% w/v milk , 1X TBS, 0.1% Tween@20 at 4°C with gentle shaking, overnight.

For Research Use Only. Not for use in diagnostic and therapeutic procedures. Not for resale without express authorization.