

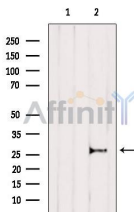
IL 11 Ab

Cat.#: AF5211
Size: 100ul,200ul

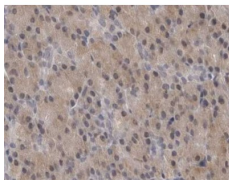
Concn.: 1mg/ml
Source: Rabbit

Mol.Wt.:
Clonality: Polyclonal

Application:	IHC 1:50-1:200, WB 1:500-1:2000
Reactivity:	Human,Mouse,Rat
Purification:	The antiserum was purified by peptide affinity chromatography using SulfoLink™ Coupling Resin (Thermo Fisher Scientific).
Specificity:	IL 11 Ab detects endogenous levels of total IL 11.
Immunogen:	A synthesized peptide derived from human IL 11.
Uniprot:	P20809
Description:	Directly stimulates the proliferation of hematopoietic stem cells and megakaryocyte progenitor cells and induces megakaryocyte maturation resulting in increased platelet production.
Subcellular Location:	Secreted.
Similarity:	Belongs to the IL-6 superfamily.
Storage Condition and Buffer:	Rabbit IgG in phosphate buffered saline , pH 7.4, 150mM NaCl, 0.02% sodium azide and 50% glycerol.Store at -20 °C.Stable for 12 months from date of receipt.



Western blot analysis of extracts from Mouse brain, using IL 11 Ab. The lane on the left was treated with blocking peptide.



Immunohistochemistry analysis of IL-11 Ab in paraffin-embedded human pancreas tissue.

IMPORTANT: For western blot, incubate membrane with diluted primary Ab in 5% w/v milk , 1X TBS, 0.1% Tween@20 at 4°C with gentle shaking, overnight.

For Research Use Only. Not for use in diagnostic and therapeutic procedures. Not for resale without express authorization.