

Interferon gamma Ab

Cat.#: AF5183	Concn.: 1mg/ml	Mol.Wt.: 19 kDa
Size: 100ul,200ul	Source: Rabbit	Clonality: Polyclonal

Application: WB 1:500-1:2000 IHC 1:50-1:200

Reactivity: Human,Mouse

Purification: The antiserum was purified by peptide affinity chromatography using SulfoLink™ Coupling Resin (Thermo Fisher Scientific).

Specificity: Interferon gamma Ab detects endogenous levels of total Interferon gamma.

Immunogen: A synthesized peptide derived from human Interferon gamma.

Uniprot: P01579

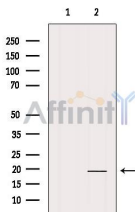
Description: Produced by lymphocytes activated by specific antigens or mitogens. IFN-gamma, in addition to having antiviral activity, has important immunoregulatory functions. It is a potent activator of macrophages, it has antiproliferative effects on transformed cells and it can potentiate the antiviral and antitumor effects of the type I interferons.

Subcellular Location: Secreted.

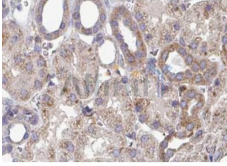
Tissue Specificity: Released primarily from activated T lymphocytes.

Similarity: Belongs to the type II (or gamma) interferon family.

Storage Condition and Buffer: Rabbit IgG in phosphate buffered saline , pH 7.4, 150mM NaCl, 0.02% sodium azide and 50% glycerol.Store at -20 °C.Stable for 12 months from date of receipt.



Western blot analysis of extracts from Mouse liver, using Interferon gamma Ab. The lane on the left was treated with blocking peptide.



AF5183 at 1/100 staining human Kidney tissue sections by IHC-P. The tissue was formaldehyde fixed and a heat mediated antigen retrieval step in citrate buffer was performed. The tissue was then blocked and incubated with the Ab for 1.5 hours at 22°C. An HRP conjugated goat anti-rabbit Ab was used as the secondary.

IMPORTANT: For western blot, incubate membrane with diluted primary Ab in 5% w/v milk , 1X TBS, 0.1% Tween@20 at 4°C with gentle shaking, overnight.

For Research Use Only. Not for use in diagnostic and therapeutic procedures. Not for resale without express authorization.