

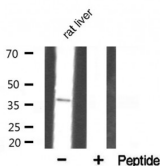
Annexin III Ab

Cat.#: AF5159
Size: 100ul,200ul

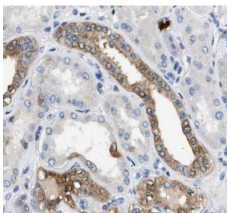
Concn.: 1mg/ml
Source: Rabbit

Mol.Wt.: 36 kDa
Clonality: Polyclonal

Application:	WB 1:500-1:2000 IHC 1:50-1:200
Reactivity:	Human,Mouse
Purification:	The antiserum was purified by peptide affinity chromatography using SulfoLink™ Coupling Resin (Thermo Fisher Scientific).
Specificity:	Annexin III Ab detects endogenous levels of total Annexin III.
Immunogen:	A synthesized peptide derived from human Annexin III.
Uniprot:	P12429
Description:	Inhibitor of phospholipase A2, also possesses anti-coagulant properties. Also cleaves the cyclic bond of inositol 1,2-cyclic phosphate to form inositol 1-phosphate.
Similarity:	A pair of annexin repeats may form one binding site for calcium and phospholipid.Belongs to the annexin family.
Storage Condition and Buffer:	Rabbit IgG in phosphate buffered saline , pH 7.4, 150mM NaCl, 0.02% sodium azide and 50% glycerol.Store at -20 °C.Stable for 12 months from date of receipt.



Western blot analysis of Annexin III Ab expression in rat liver tissue lysates.The lane on the right was treated with the antigen-specific peptide.



Annexin A3 Ab for IHC in human kidney tissue

in 5% w/v milk , 1X TBS, 0.1% Tween@20 at 4°C with gentle shaking,
overnight.

For Research Use Only. Not for use in diagnostic and therapeutic
procedures. Not for resale without express authorization.