

Annexin I Ab

Cat.#: AF5154
Size: 100ul,200ul

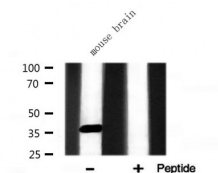
Concn.: 1mg/ml
Source: Rabbit

Mol.Wt.: 38 kDa
Clonality: Polyclonal

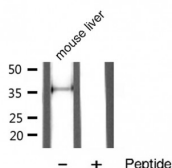
| | |
|-----------------------|---|
| Application: | WB 1:500-1:2000 IHC 1:50-1:200 |
| Reactivity: | Human,Mouse,Rat |
| Purification: | The antiserum was purified by peptide affinity chromatography using SulfoLink™ Coupling Resin (Thermo Fisher Scientific). |
| Specificity: | Annexin I Ab detects endogenous levels of total Annexin I. |
| Immunogen: | A synthesized peptide derived from human Annexin I. |
| Uniprot: | P04083 |
| Description: | Calcium/phospholipid-binding protein which promotes membrane fusion and is involved in exocytosis. This protein regulates phospholipase A2 activity. It seems to bind from two to four calcium ions with high affinity. |
| Subcellular Location: | Nucleus. Cytoplasm. Cell projection > cilium. Basolateral cell membrane. Found in the cilium, nucleus and basolateral cell membrane of ciliated cells in the tracheal endothelium (By similarity). Found in the cytoplasm of type II pneumocytes and alveolar macrophages. |
| Tissue Specificity: | Detected in resting neutrophils (PubMed:10772777). Detected in peripheral blood T-cells (PubMed:17008549). Detected in extracellular vesicles in blood serum from patients with inflammatory bowel disease, but not in serum from healthy donors (PubMed:25664854). Detected in placenta (at protein level) (PubMed:2532504). Detected in liver. |
| Similarity: | The full-length protein can bind eight Ca ²⁺ ions via the annexin repeats. Calcium binding causes a major conformation change that modifies dimer contacts and leads to surface exposure of the N-terminal phosphorylation sites; in the absence of Ca ²⁺ , these sites are buried in the interior of the protein core. The N-terminal region becomes disordered in response to calcium-binding. The N-terminal 26 amino acids are sufficient for its extracellular functions in the regulation of inflammation and wound healing (PubMed:25664854). Acylated peptides that contain the first 26 amino acids of the mature protein can activate signaling via the formyl peptide receptors (PubMed:15187149, PubMed:25664854). Belongs to the annexin family. |

Storage Condition and Buffer:

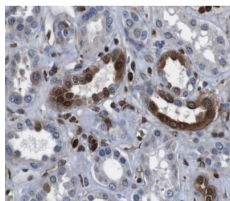
Rabbit IgG in phosphate buffered saline , pH 7.4, 150mM NaCl, 0.02% sodium azide and 50% glycerol. Store at -20 °C. Stable for 12 months from date of receipt.



Western blot analysis of Annexin I expression in Mouse brain lysate



Western blot analysis of Annexin I Ab expression in mouse liver tissue lysates. The lane on the right was treated with the antigen-specific peptide.



IHC analysis of Annexin I expression in COLO.

IMPORTANT: For western blot, incubate membrane with diluted primary Ab in 5% w/v milk , 1X TBS, 0.1% Tween@20 at 4°C with gentle shaking, overnight.

For Research Use Only. Not for use in diagnostic and therapeutic procedures. Not for resale without express authorization.