

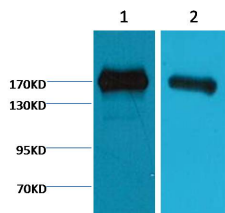
EGFR Ab

Cat.#: BF9105
Size: 50ul,100ul,200ul

Concn.: 1mg/ml
Source: Mouse

Mol.Wt.: 170KD
Clonality: Monoclonal

Application:	WB 1:500-1:2000 IP 1:200
Reactivity:	Human
Purification:	affinity purification.
Specificity:	The EGFR Ab can recognize endogenous EGFR proteins.
Immunogen:	Mouse monoclonal antibody is prepared by immunizing synthetic peptide coupled to KLH.
Uniprot:	P00533
Description:	The epidermal growth factor receptor (EGFR; ErbB-1; HER1 in humans) is the cell-surface receptor for members of the epidermal growth factor family (EGF-family) of extracellular protein ligands. Known ligands include EGF, TGFA/TGF- α , amphiregulin, epigen/EPGN, BTC/betacellulin, epiregulin/EREG and HBEGF/heparin-binding EGF. Ligand binding triggers receptor homo- and/or heterodimerization and autophosphorylation on key cytoplasmic residues. The phosphorylated receptor recruits adapter proteins like GRB2 which in turn activates complex downstream signaling cascades.
Subcellular Location:	Secreted and Cell membrane. Endoplasmic reticulum membrane. Golgi apparatus membrane. Nucleus membrane. Endosome. Endosome membrane. Nucleus. In response to EGF, translocated from the cell membrane to the nucleus via Golgi and ER. Endocytosed upon activation by ligand. Colocalized with GPER1 in the nucleus of estrogen agonist-induced cancer-associated fibroblasts (CAF).
Tissue Specificity:	Ubiquitously expressed. Isoform 2 is also expressed in ovarian cancers.
Similarity:	Belongs to the protein kinase superfamily. Tyr protein kinase family. EGF receptor subfamily.
Storage Condition and Buffer:	1mg/ml in PBS, pH 7.4, containing 0.02% sodium azide and 50% glycerol.



Western blot analysis of EGFR Ab expression in A431 and Caco-2 cells lysates.

IMPORTANT: For western blot, incubate membrane with diluted primary Ab in 5% w/v milk, 1X TBS, 0.1% Tween@20 at 4°C with gentle shaking, overnight.

For Research Use Only. Not for use in diagnostic and therapeutic procedures. Not for resale without express authorization.