

## MSH6 Ab

Cat.#: BF0232  
Size: 50ul,100ul,200ul

Concn.: 1mg/ml  
Source: Mouse

Mol.Wt.: 153kDa  
Clonality: Monoclonal

Application:	ELISA 1/10000, WB 1/500 - 1/2000
Reactivity:	Human
Purification:	Affinity-chromatography.
Specificity:	MSH6 Ab detects endogenous levels of total MSH6.
Immunogen:	Purified recombinant fragment of human MSH6 expressed in E. Coli.
Uniprot:	P52701
Description:	Restores repair of base-base and single- nucleotide insertion-deletion mismatches, and increases the proficiency to process heteroduplexes with two-, three-, or four- nucleotide insertion-deletion mismatches. GTBP binds covalently to G/T mismatches.
Subcellular Location:	Nucleus.
Similarity:	The PWWP domain specifically recognizes and binds trimethylated 'Lys-36' of histone H3 (H3K36me3).Belongs to the DNA mismatch repair MutS family.
Storage Condition and Buffer:	Mouse IgG1 in phosphate buffered saline (without Mg2+ and Ca2+), pH 7.4, 150mM NaCl, 0.02% sodium azide and 50% glycerol.Store at -20 °C.Stable for 12 months from date of receipt.

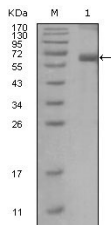


Figure 1: Western blot analysis using MSH6 mouse mAb against truncated MSH6 recombinant protein.

**IMPORTANT:** For western blot, incubate membrane with diluted primary Ab in 5% w/v milk , 1X TBS, 0.1% Tween@20 at 4°C with gentle shaking, overnight.

---

procedures. Not for resale without express authorization.