

## **BRAF Ab**

Cat.#: BF0235  
Size: 50ul,100ul,200ul

Concn.: 1mg/ml  
Source: Mouse

Mol.Wt.: 84.4kDa  
Clonality: Monoclonal

Application:	ELISA 1/10000, WB 1/500 - 1/2000, IHC 1/200 - 1/1000
Reactivity:	Human
Purification:	Affinity-chromatography.
Specificity:	BRAF Ab detects endogenous levels of total BRAF.
Immunogen:	Purified recombinant fragment of human BRAF expressed in E. Coli.
Uniprot:	P15056
Description:	B-Raf is a tyrosine kinase-like kinase of the RAF family. Involved in the transduction of mitogenic signals from the cell membrane to the nucleus. May play a role in the postsynaptic responses of hippocampal neuron. Frequently mutated in thyroid cancers, skin melanomas and at lower frequency in a wide range of human cancers. An activating mutation, mimicking phosphorylation of the activation loop, is seen in 60% of malignant melanoma samples. Raf mutations are generally exclusive to Ras activating mutations. Activating mutations are also seen in ~10% of colorectal cancers, in lung cancers and gliomas, and at a lower rate in several other tumors. Inactivating mutations are also seen and may result in activation of c-Raf and Erk. Mutations in B-Raf, MEK1 and MEK2 also associated with cardiofaciocutaneous syndrome, displaying morphological, cardiac and mental defects. Approved Inhibitor: Nexavar/Sorafenib.
Subcellular Location:	Nucleus. Cytoplasm. Cell membrane. Colocalizes with RGS14 and RAF1 in both the cytoplasm and membranes.
Tissue Specificity:	Brain and testis.
Similarity:	Belongs to the protein kinase superfamily. TKL Ser/Thr protein kinase family. RAF subfamily.
Storage Condition and Buffer:	Mouse IgG1 in phosphate buffered saline (without Mg <sup>2+</sup> and Ca <sup>2+</sup> ), pH 7.4, 150mM NaCl, 0.02% sodium azide and 50% glycerol.Store at -20 °C.Stable for 12 months from date of receipt.

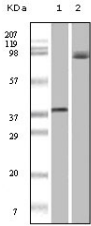


Figure 1: Western blot analysis using BRAF mouse mAb against truncated recombinant Braf (1) and A431 cell lysates (2).

**IMPORTANT:** For western blot, incubate membrane with diluted primary Ab in 5% w/v milk , 1X TBS, 0.1% Tween@20 at 4°C with gentle shaking, overnight.

For Research Use Only. Not for use in diagnostic and therapeutic procedures. Not for resale without express authorization.