

BMP8B Ab

Cat.#: DF3850
Size: 100ul, 200ul

Concn.: 1mg/ml
Source: Rabbit

Mol.Wt.: 45 KD
Clonality: Polyclonal

Application: WB 1:500~1:1000, IF/ICC 1:100-1:500

Reactivity: Human

Purification: The antiserum was purified by peptide affinity chromatography using SulfoLink™ Coupling Resin (Thermo Fisher Scientific).

Specificity: BMP8B Ab detects endogenous levels of total BMP8B.

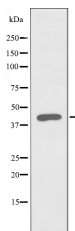
Immunogen: A synthesized peptide.

Uniprot: P34820

Subcellular Location: Secreted.

Similarity: Belongs to the TGF-beta family.

Storage Condition and Buffer: Rabbit IgG in phosphate buffered saline , pH 7.4, 150mM NaCl, 0.02% sodium azide and 50% glycerol. Store at -20 °C. Stable for 12 months from date of receipt.



Western blot analysis of extracts from 293 cells using BMP8B Ab.



DF3850 staining 293 by IF/ICC. The sample were fixed with PFA and permeabilized in 0.1% Triton X-100, then blocked in 10% serum for 45 minutes at 25°C. The primary Ab was diluted at 1/200 and incubated with the sample for 1 hour at 37°C. An Alexa Fluor 594 conjugated goat anti-rabbit IgG (H+L) Ab, diluted at 1/600, was used as the secondary Ab.

IMPORTANT: For western blot, incubate membrane with diluted primary Ab in 5% w/v milk , 1X TBS, 0.1% Tween@20 at 4°C with gentle shaking, overnight.



Affinity Biosciences

website: www.affbiotech.com

order: order@affbiotech.com

For Research Use Only. Not for use in diagnostic and therapeutic procedures. Not for resale without express authorization.