

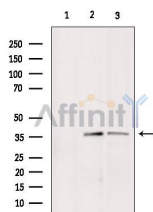
BNIP2 Ab

Cat.#: DF3827
Size: 100ul, 200ul

Concn.: 1mg/ml
Source: Rabbit

Mol.Wt.: 36 KD
Clonality: Polyclonal

Application:	WB 1:500~1:1000, IF/ICC 1:100-1:500
Reactivity:	Human, Mouse, Rat
Purification:	The antiserum was purified by peptide affinity chromatography using SulfoLink™ Coupling Resin (Thermo Fisher Scientific).
Specificity:	BNIP2 Ab detects endogenous levels of total BNIP2.
Immunogen:	A synthesized peptide.
Uniprot:	Q12982
Subcellular Location:	Cytoplasm. Cytoplasm > perinuclear region. Localizes to the nuclear envelope region and to other cytoplasmic structures.
Storage Condition and Buffer:	Rabbit IgG in phosphate buffered saline, pH 7.4, 150mM NaCl, 0.02% sodium azide and 50% glycerol. Store at -20 °C. Stable for 12 months from date of receipt.



Western blot analysis of extracts from various samples, using BNIP2 Ab.

Lane 1: mouse brain treated with blocking peptide.
Lane 2: mouse brain;
Lane 3: rat brain;



DF3827 staining HeLa cells by IF/ICC. The sample were fixed with PFA and permeabilized in 0.1% Triton X-100, then blocked in 10% serum for 45 minutes at 25°C. The primary Ab was diluted at 1/200 and incubated with the sample for 1 hour at 37°C. An Alexa Fluor 594 conjugated goat anti-rabbit IgG (H+L) Ab (Red), diluted at 1/600, was used as secondary Ab.

IMPORTANT: For western blot, incubate membrane with diluted primary Ab in 5% w/v milk, 1X TBS, 0.1% Tween@20 at 4°C with gentle shaking, overnight.