

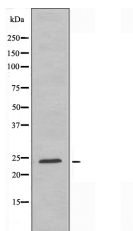
## ARL2BP Ab

Cat.#: DF3749  
Size: 100ul, 200ul

Concn.: 1mg/ml  
Source: Rabbit

Mol.Wt.: 25 KD  
Clonality: Polyclonal

Application:	WB 1:500~1:1000, IF/ICC 1:100-1:500
Reactivity:	Human, Mouse, Rat
Purification:	The antiserum was purified by peptide affinity chromatography using SulfoLink™ Coupling Resin (Thermo Fisher Scientific).
Specificity:	ARL2BP Ab detects endogenous levels of total ARL2BP.
Immunogen:	A synthesized peptide.
Uniprot:	Q9Y2Y0
Subcellular Location:	Cytoskeleton; Mitochondrion; Nucleus;
Tissue Specificity:	Expressed in retina pigment epithelial cells (at protein level). Widely expressed.
Similarity:	Belongs to the ARL2BP family.
Storage Condition and Buffer:	Rabbit IgG in phosphate buffered saline, pH 7.4, 150mM NaCl, 0.02% sodium azide and 50% glycerol. Store at -20 °C. Stable for 12 months from date of receipt.



Western blot analysis of extracts from A549 cells, using ARL2BP Ab.



DF3749 staining A549 cells by IF/ICC. The sample were fixed with PFA and permeabilized in 0.1% Triton X-100, then blocked in 10% serum for 45 minutes at 25°C. The primary Ab was diluted at 1/200 and incubated with the sample for 1 hour at 37°C. An Alexa Fluor 594 conjugated goat anti-rabbit IgG (H+L) Ab (Red), diluted at 1/600, was used as secondary Ab.

**IMPORTANT:** For western blot, incubate membrane with diluted primary Ab

---

in 5% w/v milk , 1X TBS, 0.1% Tween@20 at 4°C with gentle shaking,  
overnight.

---

For Research Use Only. Not for use in diagnostic and therapeutic  
procedures. Not for resale without express authorization.