

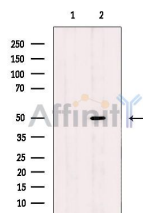
## CADM1 Ab

Cat.#: DF3535  
Size: 100ul, 200ul

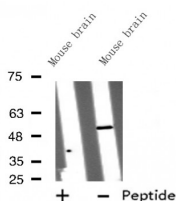
Concn.: 1mg/ml  
Source: Rabbit

Mol.Wt.: 49 KD  
Clonality: Polyclonal

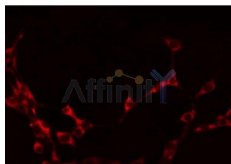
Application:	WB 1:500~1:1000, IF/ICC 1:100-1:500
Reactivity:	Human, Mouse
Purification:	The antiserum was purified by peptide affinity chromatography using SulfoLink™ Coupling Resin (Thermo Fisher Scientific).
Specificity:	CADM1 Ab detects endogenous levels of total CADM1.
Immunogen:	A synthesized peptide.
Uniprot:	Q9BY67
Subcellular Location:	Cell membrane. Associates with perinuclear and plasma membranes in vivo. Localized to the basolateral plasma membrane of epithelial cells in gall bladder.
Similarity:	The cytoplasmic domain appears to play a critical role in proapoptosis and tumor suppressor activity in NSCLC. Belongs to the nectin family.
Storage Condition and Buffer:	Rabbit IgG in phosphate buffered saline , pH 7.4, 150mM NaCl, 0.02% sodium azide and 50% glycerol. Store at -20 °C. Stable for 12 months from date of receipt.



Western blot analysis of extracts from Mouse brain, using CADM1 Ab. The lane on the left was treated with blocking peptide.



Western blot analysis of CADM1 expression in Mouse brain lysates



DF3535 staining HeLa by IF/ICC. The sample were fixed with PFA and permeabilized in 0.1% Triton X-100, then blocked in 10% serum for 45 minutes at 25°C. The primary Ab was diluted at 1/200 and incubated with the sample for 1 hour at 37°C. An Alexa Fluor 594 conjugated goat anti-rabbit IgG (H+L) Ab, diluted at 1/600, was used as the secondary Ab.

**IMPORTANT:** For western blot, incubate membrane with diluted primary Ab in 5% w/v milk, 1X TBS, 0.1% Tween@20 at 4°C with gentle shaking, overnight.

For Research Use Only. Not for use in diagnostic and therapeutic procedures. Not for resale without express authorization.