

## MLTK Ab

Cat.#: DF3454  
 Size: 100ul,200ul

Concn.: 1mg/ml  
 Source: Rabbit

Mol.Wt.: 91 KD  
 Clonality: Polyclonal

**Application:** WB 1:500~1:1000 IF/ICC 1:100-1:500

**Reactivity:** Human,Mouse

**Purification:** The antiserum was purified by peptide affinity chromatography using SulfoLink™ Coupling Resin (Thermo Fisher Scientific).

**Specificity:** MLTK Ab detects endogenous levels of total MLTK.

**Immunogen:** A synthesized peptide.

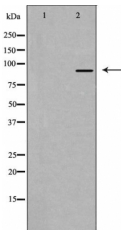
**Uniprot:** Q9NYL2

**Subcellular Location:** Cytoplasm. Nucleus. Translocates to the nucleus upon ultraviolet B irradiation.

**Tissue Specificity:** Ubiquitously expressed. Isoform 2 is the predominant form in all tissues examined, except for liver, in which isoform 1 is more highly expressed.

**Similarity:** Belongs to the protein kinase superfamily. STE Ser/Thr protein kinase family. MAP kinase kinase subfamily.

**Storage Condition and Buffer:** Rabbit IgG in phosphate buffered saline , pH 7.4, 150mM NaCl, 0.02% sodium azide and 50% glycerol.Store at -20 °C.Stable for 12 months from date of receipt.



Western blot analysis of extracts from HeLa cells, using MLTK Ab.The lane on the left was treated with the antigen-specific peptide.



DF3454 staining HepG2 by IF/ICC. The sample were fixed with PFA and permeabilized in 0.1% Triton X-100,then blocked in 10% serum for 45 minutes at 25°C. The primary Ab was diluted at 1/200 and incubated with the sample for 1 hour at 37°C. An Alexa Fluor 594 conjugated goat anti-rabbit IgG (H+L) Ab, diluted at 1/600, was used as the secondary Ab.

**IMPORTANT:** For western blot, incubate membrane with diluted primary Ab in 5% w/v milk , 1X TBS, 0.1% Tween@20 at 4°C with gentle shaking, overnight.

For Research Use Only. Not for use in diagnostic and therapeutic procedures. Not for resale without express authorization.