

MSH2 Ab

Cat.#: BF0300
Size: 50ul,100ul,200ul

Concn.: 1mg/ml
Source: Mouse

Mol.Wt.: 105kDa
Clonality: Monoclonal

Application:	ELISA 1/10000, WB 1/500 - 1/2000, IHC 1/200 - 1/1000, ICC 1/200 - 1/1000
Reactivity:	Human,Monkey
Purification:	Affinity-chromatography.
Specificity:	MSH2 Ab detects endogenous levels of total MSH2.
Immunogen:	Purified recombinant fragment of human MSH2 expressed in E. Coli.
Uniprot:	P43246
Description:	MSH2 was identified as a locus frequently mutated in hereditary nonpolyposis colon cancer (HNPCC). When cloned, it was discovered to be a human homolog of the E. coli mismatch repair gene mutS, consistent with the characteristic alterations in microsatellite sequences (RER+ phenotype) found in HNPCC.
Subcellular Location:	Nucleus.
Tissue Specificity:	Ubiquitously expressed.
Similarity:	Belongs to the DNA mismatch repair MutS family.
Storage Condition and Buffer:	Mouse IgG1 in phosphate buffered saline (without Mg ²⁺ and Ca ²⁺), pH 7.4, 150mM NaCl, 0.02% sodium azide and 50% glycerol.Store at -20 °C.Stable for 12 months from date of receipt.

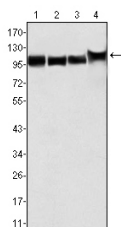
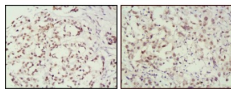
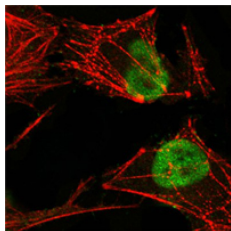


Figure 1: Western blot analysis using MSH2 mouse mAb against HeLa (1), A549 (2), A431 (3) and HEK293 (4) cell lysate.



Immunohistochemical analysis of paraffin-embedded human breast cancer (left) and lung cancer (right) tissues, showing nuclear localization using MSH2 mouse mAb with DAB staining.



Confocal immunofluorescence analysis of HeLa cells using MSH2 mouse mAb (green), showing nuclear localization. Red: Actin filaments have been labeled with Alexa Fluor-555 phalloidin.

IMPORTANT: For western blot, incubate membrane with diluted primary Ab in 5% w/v milk , 1X TBS, 0.1% Tween@20 at 4°C with gentle shaking, overnight.

For Research Use Only. Not for use in diagnostic and therapeutic procedures. Not for resale without express authorization.