

TCF3 Ab

Cat.#: DF3097
Size: 100ul,200ul

Concn.: 1mg/ml
Source: Rabbit

Mol.Wt.: 68 KD
Clonality: Polyclonal

Application: WB 1:500~1:1000 IHC: 1:50~1:200

Reactivity: Human, Mouse, Rat

Purification: The antiserum was purified by peptide affinity chromatography using SulfoLink™ Coupling Resin (Thermo Fisher Scientific).

Specificity: TCF3 Ab detects endogenous levels of total TCF3.

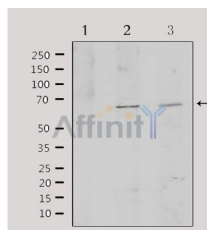
Immunogen: A synthesized peptide.

Uniprot: P15923

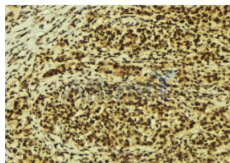
Subcellular Location: Nucleus.

Similarity: the 9aaTAD motif is a transactivation domain present in a large number of yeast and animal transcription factors.

Storage Condition and Buffer: Rabbit IgG in phosphate buffered saline , pH 7.4, 150mM NaCl, 0.02% sodium azide and 50% glycerol. Store at -20 °C. Stable for 12 months from date of receipt.



Western blot analysis of extracts from various samples, using TCF3 Ab. Lane 1: HepG2 treated with blocking peptide; Lane 2: HepG2; Lane 3: 293;



DF3097 at 1/100 staining Human breast cancer tissue by IHC-P. The sample was formaldehyde fixed and a heat mediated antigen retrieval step in citrate buffer was performed. The sample was then blocked and incubated with the Ab for 1.5 hours at 22°C. An HRP conjugated goat anti-rabbit Ab was used as the secondary.

IMPORTANT: For western blot, incubate membrane with diluted primary Ab in 5% w/v milk , 1X TBS, 0.1% Tween@20 at 4°C with gentle shaking, overnight.



Affinity Biosciences

website: www.affbiotech.com

order: order@affbiotech.com

For Research Use Only. Not for use in diagnostic and therapeutic procedures. Not for resale without express authorization.