

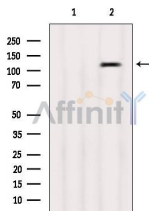
## PKD1/2/3/PKC $\mu$ Ab

Cat.#: AF6444  
Size: 100ul,200ul

Concn.: 1mg/ml  
Source: Rabbit

Mol.Wt.: 115kDa  
Clonality: Polyclonal

Application:	WB 1:500-1:2000, IF/ICC 1:100-1:500
Reactivity:	Human,Mouse,Rat
Purification:	The antiserum was purified by peptide affinity chromatography using SulfoLink™ Coupling Resin (Thermo Fisher Scientific).
Specificity:	PKD1/2/3/PKC $\mu$ Ab detects endogenous levels of total PKD1/2/3/PKC $\mu$ .
Immunogen:	A synthesized peptide derived from human PKD1/2/3/PKC $\mu$ .
Uniprot:	Q15139/Q9BZL6/O94806
Description:	PKD3 a CAMK kinase of the PKD family. An important component of signaling pathways downstream from novel PKC enzymes after B-cell receptor engagement.
Subcellular Location:	Cytoplasm. Membrane. Translocation to the cell membrane is required for kinase activation.
Tissue Specificity:	Up-regulated by the intestine-specific transcription factor CDX1 in an activated KRAS-dependent manner in colorectal cancer (CRC) cells (PubMed:24623306).
Similarity:	Belongs to the protein kinase superfamily. CAMK Ser/Thr protein kinase family. PKD subfamily.
Storage Condition and Buffer:	Rabbit IgG in phosphate buffered saline , pH 7.4, 150mM NaCl, 0.02% sodium azide and 50% glycerol.Store at -20 °C.Stable for 12 months from date of receipt.



Western blot analysis of extracts from Mouse muscle, using PKD1/2/3/PKC  $\mu$  Ab. The lane on the left was treated with blocking peptide.



AF6444 staining A549 cells by IF/ICC. The sample were fixed with PFA and permeabilized in 0.1% Triton X-100, then blocked in 10% serum for 45 minutes at 25°C. The primary Ab was diluted at 1/200 and incubated with the sample for 1 hour at 37°C. An Alexa Fluor 594 conjugated goat anti-rabbit IgG (H+L) Ab(Red), diluted at 1/600, was used as secondary Ab.

**IMPORTANT:** For western blot, incubate membrane with diluted primary Ab in 5% w/v milk , 1X TBS, 0.1% Tween@20 at 4°C with gentle shaking, overnight.

For Research Use Only. Not for use in diagnostic and therapeutic procedures. Not for resale without express authorization.