

4E-BP1 Ab

Cat.#: AF6432
Size: 100ul,200ul

Concn.: 1mg/ml
Source: Rabbit

Mol.Wt.: 18kDa
Clonality: Polyclonal

Application: WB 1:500-1:2000 IHC 1:50-1:200, IF/ICC 1:100-1:500

Reactivity: Human,Mouse,Rat

Purification: The antiserum was purified by peptide affinity chromatography using SulfoLink™ Coupling Resin (Thermo Fisher Scientific).

Specificity: 4E-BP1 Ab detects endogenous levels of total 4E-BP1.

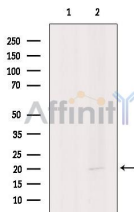
Immunogen: A synthesized peptide derived from human 4E-BP1.

Uniprot: Q13541

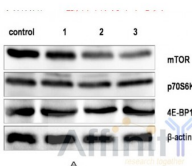
Description: 4E-BP1 binds to eIF4E, preventing its assembly into the EIF4F complex and inhibiting cap-dependent translation. Phosphorylation of 4E-BP1 disrupts this binding, activating cap-dependent translation.

Similarity: The TOS motif mediates interaction with RPTOR, leading to promote phosphorylation by mTORC1 complex.Belongs to the eIF4E-binding protein family.

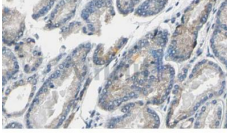
Storage Condition and Buffer: Rabbit IgG in phosphate buffered saline , pH 7.4, 150mM NaCl, 0.02% sodium azide and 50% glycerol.Store at -20 °C.Stable for 12 months from date of receipt.



Western blot analysis of extracts from MCF7, using 4E-BP1 Ab. The lane on the left was treated with blocking peptide.



This image is a courtesy of anonymous review.



AF6432 at 1/100 staining Human prostate tissue by IHC-P. The sample was formaldehyde fixed and a heat mediated antigen retrieval step in citrate buffer was performed. The sample was then blocked and incubated with the Ab for 1.5 hours at 22°C. An HRP conjugated goat anti-rabbit Ab was used as the secondary.



AF6432 staining HeLa by IF/ICC. The sample were fixed with PFA and permeabilized in 0.1% Triton X-100, then blocked in 10% serum for 45 minutes at 25°C. The primary Ab was diluted at 1/200 and incubated with the sample for 1 hour at 37°C. An Alexa Fluor 594 conjugated goat anti-rabbit IgG (H+L) Ab, diluted at 1/600, was used as the secondary Ab.

IMPORTANT: For western blot, incubate membrane with diluted primary Ab in 5% w/v milk , 1X TBS, 0.1% Tween@20 at 4°C with gentle shaking, overnight.

For Research Use Only. Not for use in diagnostic and therapeutic procedures. Not for resale without express authorization.