

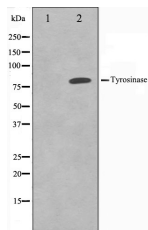
Tyrosinase Ab

Cat.#: AF0286
Size: 100ul,200ul

Concn.: 1mg/ml
Source: Rabbit

Mol.Wt.: 80kDa
Clonality: Polyclonal

Application:	WB: 1:500~1:3000, IF/ICC 1:100-1:500
Reactivity:	Human,Monkey
Purification:	The antiserum was purified by peptide affinity chromatography using SulfoLink™ Coupling Resin (Thermo Fisher Scientific).
Specificity:	Tyrosinase Ab detects endogenous levels of total Tyrosinase.
Immunogen:	A synthesized peptide derived from human Tyrosinase.
Uniprot:	P14679
Description:	TYR This is a copper-containing oxidase that functions in the formation of pigments such as melanins and other polyphenolic compounds. Catalyzes the rate-limiting conversions of tyrosine to DOPA, DOPA to DOPA-quinone and possibly 5,6-dihydroxyindole to indole-5,6 quinone.
Subcellular Location:	Melanosome membrane.
Tissue Specificity:	Increased expression after UVB irradiation.
Similarity:	Belongs to the tyrosinase family.
Storage Condition and Buffer:	Rabbit IgG in phosphate buffered saline , pH 7.4, 150mM NaCl, 0.02% sodium azide and 50% glycerol.Store at -20 °C.Stable for 12 months from date of receipt.



Western blot analysis on COS7 cell lysates using Tyrosinase Ab.The lane on the left was treated with the antigen-specific peptide.



AF0286 staining COS7 by IF/ICC. The sample were fixed with PFA and permeabilized in 0.1% Triton X-100, then blocked in 10% serum for 45 minutes at 25°C. The primary Ab was diluted at 1/200 and incubated with the sample for 1 hour at 37°C. An Alexa Fluor 594 conjugated goat anti-rabbit IgG (H+L) Ab, diluted at 1/600, was used as the secondary Ab.

IMPORTANT: For western blot, incubate membrane with diluted primary Ab in 5% w/v milk, 1X TBS, 0.1% Tween@20 at 4°C with gentle shaking, overnight.

For Research Use Only. Not for use in diagnostic and therapeutic procedures. Not for resale without express authorization.