

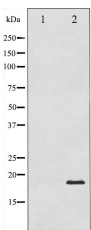
Pin1 Ab

Cat.#: AF6430
Size: 100ul,200ul

Concn.: 1mg/ml
Source: Rabbit

Mol.Wt.: 18kDa
Clonality: Polyclonal

Application:	WB 1:500-1:2000 IF/ICC 1:100-1:500
Reactivity:	Human,Mouse,Rat,Monkey
Purification:	The antiserum was purified by peptide affinity chromatography using SulfoLink™ Coupling Resin (Thermo Fisher Scientific).
Specificity:	Pin1 Ab detects endogenous levels of total Pin1.
Immunogen:	A synthesized peptide derived from human Pin1.
Uniprot:	Q13526
Description:	Pin1 is a member of the parvulin family of peptidyl-prolyl isomerases (PPlase), has been implicated in the G2-M transition of the cell cycle. Has two distinct functional domains: an N-terminal WW domain and a C-terminal PPlase domain.
Subcellular Location:	Nucleus.
Tissue Specificity:	The phosphorylated form at Ser-71 is expressed in normal breast tissue cells but not in breast cancer cells.
Similarity:	The WW domain is required for the interaction with STIL and KIF20B.
Storage Condition and Buffer:	Rabbit IgG in phosphate buffered saline , pH 7.4, 150mM NaCl, 0.02% sodium azide and 50% glycerol.Store at -20 °C.Stable for 12 months from date of receipt.



Western blot analysis of Pin1 expression in COS7 whole cell lysates.The lane on the left was treated with the antigen-specific peptide.



AF6430 staining COS7 by IF/ICC. The sample were fixed with PFA and permeabilized in 0.1% Triton X-100,then blocked in 10% serum for 45 minutes at 25°C. The primary Ab was diluted at 1/200 and incubated with the sample for 1 hour at 37°C. An Alexa Fluor 594 conjugated goat anti-rabbit IgG (H+L) Ab, diluted at 1/600, was used as the secondary Ab.



AF6430 staining A549 cells by IF/ICC. The sample were fixed with PFA and permeabilized in 0.1% Triton X-100,then blocked in 10% serum for 45 minutes at 25°C. The primary Ab was diluted at 1/200 and incubated with the sample for 1 hour at 37°C. An Alexa Fluor 594 conjugated goat anti-rabbit IgG (H+L) Ab(Red), diluted at 1/600, was used as secondary Ab.

IMPORTANT: For western blot, incubate membrane with diluted primary Ab in 5% w/v milk , 1X TBS, 0.1% Tween@20 at 4°C with gentle shaking, overnight.

For Research Use Only. Not for use in diagnostic and therapeutic procedures. Not for resale without express authorization.