

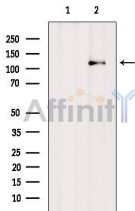
## GAB1 Ab

Cat.#: AF6429  
 Size: 100ul,200ul

Concn.: 1mg/ml  
 Source: Rabbit

Mol.Wt.: 110kDa  
 Clonality: Polyclonal

- Application:** WB 1:500-1:2000, IF/ICC 1:100-1:500
- Reactivity:** Human,Mouse,Rat
- Purification:** The antiserum was purified by peptide affinity chromatography using SulfoLink™ Coupling Resin (Thermo Fisher Scientific).
- Specificity:** GAB1 Ab detects endogenous levels of total GAB1.
- Immunogen:** A synthesized peptide derived from human GAB1.
- Uniprot:** Q13480
- Description:** Grb2-associated binding protein 1 is a member of the IRS-1-like multisubstrate docking protein family. Contains an N-terminal pleckstrin homology (PH) domain and several proline-rich SH3 domain-binding sequences.
- Similarity:** Belongs to the GAB family.
- Storage Condition and Buffer:** Rabbit IgG in phosphate buffered saline , pH 7.4, 150mM NaCl, 0.02% sodium azide and 50% glycerol.Store at -20 °C.Stable for 12 months from date of receipt.



Western blot analysis of extracts from Rat brain, using GAB1 Ab. The lane on the left was treated with blocking peptide.



Western blot analysis of GAB1 expression in EGF treated HuvEc whole cell lysates,The lane on the left was treated with the antigen-specific peptide.



AF6429 staining NIH-3T3 by IF/ICC. The sample were fixed with PFA and permeabilized in 0.1% Triton X-100, then blocked in 10% serum for 45 minutes at 25°C. The primary Ab was diluted at 1/200 and incubated with the sample for 1 hour at 37°C. An Alexa Fluor 594 conjugated goat anti-rabbit IgG (H+L) Ab, diluted at 1/600, was used as the secondary Ab.

**IMPORTANT:** For western blot, incubate membrane with diluted primary Ab in 5% w/v milk, 1X TBS, 0.1% Tween@20 at 4°C with gentle shaking, overnight.

For Research Use Only. Not for use in diagnostic and therapeutic procedures. Not for resale without express authorization.