

GSK3 beta Ab

Cat.#: BF0721
Size: 50ul,100ul,200ul

Concn.: 1mg/ml
Source: Mouse

Mol.Wt.: 47kDa
Clonality: Monoclonal

Application: WB 1:500-1:2000, IHC 1:100-1:1000, IF 1:100-1:1000

Reactivity: Human,Mouse,Rat

Purification: Affinity-chromatography.

Specificity: GSK3 beta mouse monoclonal Ab detects endogenous levels of total GSK3 beta.

Immunogen: Purified recombinant fragment of human GSK3 beta expressed in E. Coli.

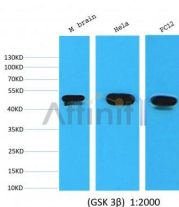
Uniprot: P49841

Subcellular Location: Plasma membrane;Nucleus;

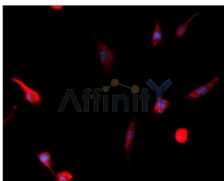
Tissue Specificity: Expressed in testis, thymus, prostate and ovary and weakly expressed in lung, brain and kidney. Colocalizes with EIF2AK2/PKR and TAU in the Alzheimer disease (AD) brain.

Similarity: Belongs to the protein kinase superfamily. CMGC Ser/Thr protein kinase family. GSK-3 subfamily.

Storage Condition and Buffer: Mouse IgG1 in phosphate buffered saline (without Mg²⁺ and Ca²⁺), pH 7.4, 150mM NaCl, 0.02% sodium azide and 50% glycerol.Store at -20 °C.Stable for 12 months from date of receipt.



Western blot analysis of extracts from various samples,using GSK3 beta mouse monoclonal Ab.



Immunocytochemistry analysis of 3T3 cells using GSK 3β mouse monoclonal Ab at dilution of 1:200.

IMPORTANT: For western blot, incubate membrane with diluted primary Ab in 5% w/v milk , 1X TBS, 0.1% Tween@20 at 4°C with gentle shaking, overnight.

For Research Use Only. Not for use in diagnostic and therapeutic procedures. Not for resale without express authorization.