

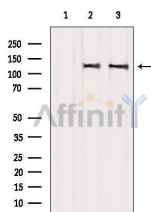
## EGFR Ab

Cat.#: AF6049  
Size: 100ul,200ul

Concn.: 1mg/ml  
Source: Rabbit

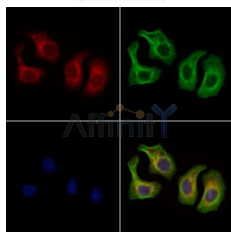
Mol.Wt.: 135kDa,170kDa  
Clonality: Polyclonal

Application:	WB 1:500-1:2000, IF/ICC 1:100-1:500
Reactivity:	Human,Mouse,Rat,Monkey
Purification:	The antiserum was purified by peptide affinity chromatography using SulfoLink™ Coupling Resin (Thermo Fisher Scientific).
Specificity:	EGFR Ab detects endogenous levels of total EGFR.
Immunogen:	A synthesized peptide derived from human EGFR.
Uniprot:	P00533
Subcellular Location:	Endosome;Endoplasmic reticulum;Nucleus;Plasma membrane;Golgi apparatus;Extracellular region or secreted;
Tissue Specificity:	Ubiquitously expressed. Isoform 2 is also expressed in ovarian cancers.
Similarity:	Belongs to the protein kinase superfamily. Tyr protein kinase family. EGF receptor subfamily.
Storage Condition and Buffer:	Rabbit IgG in phosphate buffered saline , pH 7.4, 150mM NaCl, 0.02% sodium azide and 50% glycerol.Store at -20 °C.Stable for 12 months from date of receipt.



Western blot analysis of extracts from various samples, using EGFR Ab.

Lane 1: VERO treated with blocking peptide;  
Lane 2: VERO;  
Lane 3: HepG2.



AF6049 staining HepG2 cells by IF/ICC. The samples were fixed with PFA and permeabilized in 0.1% Triton X-100, then blocked in 10% serum for 45 minutes at 25°C. Samples were then incubated with primary Ab(AF6049 1:200) and mouse anti-beta tubulin Ab(T0023 1:200) for 1 hour at 37°C. An AlexaFluor594 conjugated goat anti-rabbit IgG(H+L) Ab(Red) and an AlexaFluor488 conjugated goat anti-mouse IgG(H+L) Ab(Green) were used as the secondary Ab.

**IMPORTANT:** For western blot, incubate membrane with diluted primary Ab in 5% w/v milk , 1X TBS, 0.1% Tween@20 at 4°C with gentle shaking, overnight.

For Research Use Only. Not for use in diagnostic and therapeutic procedures. Not for resale without express authorization.