

## Histone H4 Ab

Cat.#: AF1020  
Size: 100ul, 200ul

Concn.: 1mg/ml  
Source: Rabbit

Mol.Wt.: 13kDa  
Clonality: Polyclonal

Application: WB 1:500-1:2000

Reactivity: Human, Mouse, Monkey

Purification: The antiserum was purified by peptide affinity chromatography using SulfoLink™ Coupling Resin (Thermo Fisher Scientific).

Specificity: Histone H4 Ab detects endogenous levels of Histone H4.

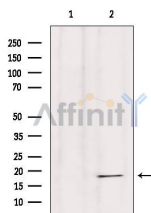
Immunogen: A synthesized peptide derived from human Histone H4.

Uniprot: P62805

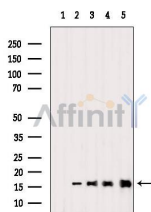
Subcellular Location: Nucleus;

Similarity: Belongs to the histone H4 family.

Storage Condition and Buffer: Rabbit IgG in phosphate buffered saline, pH 7.4, 150mM NaCl, 0.02% sodium azide and 50% glycerol. Store at -20 °C. Stable for 12 months from date of receipt.



Western blot analysis of extracts from HeLa, using Histone H4 Ab. Lane 1 was treated with the blocking peptide.



Western blot analysis of extracts from various samples, using Histone H4 Ab.

Lane 1: Hybridoma cells treated with blocking peptide;  
Lane 2: Hybridoma cells;  
Lane 3: HeLa cells;  
Lane 4: Vero cells;  
Lane 5: Mouse lung tissue.

**IMPORTANT:** For western blot, incubate membrane with diluted primary Ab in 5% w/v milk, 1X TBS, 0.1% Tween@20 at 4°C with gentle shaking, overnight.



**Affinity Biosciences**

website: [www.affbiotech.com](http://www.affbiotech.com)

order: [order@affbiotech.com](mailto:order@affbiotech.com)

---

For Research Use Only. Not for use in diagnostic and therapeutic procedures. Not for resale without express authorization.