

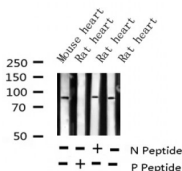
## Phospho-ATRIP (Ser68) Ab

Cat.#: AF3468  
 Size: 100ul,200ul

Concn.: 1mg/ml  
 Source: Rabbit

Mol.Wt.: 80kDa  
 Clonality: Polyclonal

|                               |  |
|-------------------------------|--|
| Application:                  | WB 1:500-1:2000, IF/ICC 1:100-1:500  |
| Reactivity:                   | Human,Mouse,Rat  |
| Purification:                 | The Ab is from purified rabbit serum by affinity purification via sequential chromatography on phospho- and non-phospho-peptide affinity columns.            |
| Specificity:                  | Phospho-ATRIP (Ser68) Ab detects endogenous levels of ATRIP only when phosphorylated at Serine 68.   |
| Immunogen:                    | A synthesized peptide derived from human ATRIP around the phosphorylation site of Serine 68.   |
| Uniprot:                      | Q8WXE1   |
| Description:                  | ATRIP is required for checkpoint signaling after DNA damage. Required for ATR expression, possibly by stabilizing the protein.                               |
| Subcellular Location:         | Nucleus. Redistributes to discrete nuclear foci upon DNA damage.   |
| Tissue Specificity:           | Ubiquitous.  |
| Similarity:                   | The EEXXXDDL motif is required for the interaction with catalytic subunit PRKDC and its recruitment to sites of DNA damage.Belongs to the ATRIP family.      |
| Storage Condition and Buffer: | Rabbit IgG in phosphate buffered saline , pH 7.4, 150mM NaCl, 0.02% sodium azide and 50% glycerol.Store at -20 °C.Stable for 12 months from date of receipt. |



Western blot analysis of Phospho-ATRIP (Ser68) expression in various lysates



AF3468 staining NIH-3T3 by IF/ICC. The sample were fixed with PFA and permeabilized in 0.1% Triton X-100, then blocked in 10% serum for 45 minutes at 25°C. The primary Ab was diluted at 1/200 and incubated with the sample for 1 hour at 37°C. An Alexa Fluor 594 conjugated goat anti-rabbit IgG (H+L) Ab, diluted at 1/600, was used as the secondary Ab.

**IMPORTANT:** For western blot, incubate membrane with diluted primary Ab in 5% w/v milk , 1X TBS, 0.1% Tween@20 at 4°C with gentle shaking, overnight.

For Research Use Only. Not for use in diagnostic and therapeutic procedures. Not for resale without express authorization.