

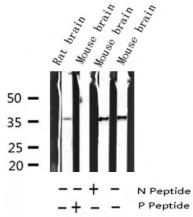
## Phospho-Syntaxin 1A (Ser14) Ab

Cat.#: AF3463  
Size: 100ul,200ul

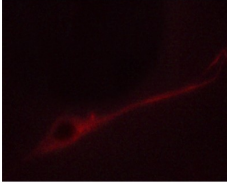
Concn.: 1mg/ml  
Source: Rabbit

Mol.Wt.: 35kDa  
Clonality: Polyclonal

Application:	WB 1:500-1:2000 IF/ICC 1:100-1:500
Reactivity:	Human,Mouse,Rat
Purification:	The Ab is from purified rabbit serum by affinity purification via sequential chromatography on phospho- and non-phospho-peptide affinity columns.
Specificity:	Phospho-Syntaxin 1A (Ser14) Ab detects endogenous levels of Syntaxin 1A only when phosphorylated at Serine 14.
Immunogen:	A synthesized peptide derived from human Syntaxin 1A around the phosphorylation site of Serine 14.
Uniprot:	Q16623
Description:	STX1A is a type IV membrane protein involved in docking of synaptic vesicles at presynaptic active zones. May play a critical role in neurotransmitter exocytosis. Part of the SNARE core complex containing SNAP25, VAMP2 and STX1A. Three splice variant isoforms have been described.
Subcellular Location:	Secreted and Cytoplasmic vesicle > secretory vesicle > synaptic vesicle membrane. Cell junction > synapse > synaptosome.
Tissue Specificity:	Isoform 1 is highly expressed in embryonic spinal chord and ganglia and in adult cerebellum and cerebral cortex. Isoform 2 is expressed in heart, liver, fat, skeletal muscle, kidney and brain.
Similarity:	Belongs to the syntaxin family.
Storage Condition and Buffer:	Rabbit IgG in phosphate buffered saline , pH 7.4, 150mM NaCl, 0.02% sodium azide and 50% glycerol.Store at -20 °C.Stable for 12 months from date of receipt.



Western blot analysis of Phospho-Syntaxin 1A (Ser14) expression in various lysates



AF3463 staining NIH/3T3 cells by ICC/IF. Cells were fixed with PFA and permeabilized in 0.1% saponin prior to blocking in 10% serum for 45 minutes at 37°C. The primary Ab was diluted 1/400 and incubated with the sample for 1 hour at 37°C. A Alexa Fluor 594 conjugated goat polyclonal to rabbit IgG (H+L), diluted 1/600 was used as secondary Ab.

**IMPORTANT:** For western blot, incubate membrane with diluted primary Ab in 5% w/v milk, 1X TBS, 0.1% Tween@20 at 4°C with gentle shaking, overnight.

For Research Use Only. Not for use in diagnostic and therapeutic procedures. Not for resale without express authorization.