

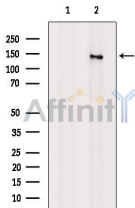
MDR3 Ab

Cat.#: DF12513
Size: 100ul,200ul

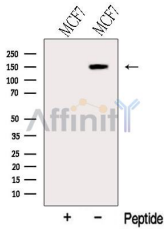
Concn.: 1mg/ml
Source: Rabbit

Mol.Wt.: 142 kDa
Clonality: Polyclonal

Application:	WB 1:500-1:2000
Reactivity:	Human,Mouse
Purification:	The antiserum was purified by peptide affinity chromatography using SulfoLink™ Coupling Resin (Thermo Fisher Scientific).
Specificity:	MDR3 Ab detects endogenous levels of MDR3.
Immunogen:	A synthesized peptide derived from human MDR3.
Uniprot:	P21439
Subcellular Location:	Plasma membrane;
Tissue Specificity:	Up-regulated by PPARA (PubMed:24122873). Up-regulated by compounds that cause peroxisome proliferation, such as fenofibrate (at protein level). Up-regulated by bezafibrate (PubMed:15258199). Up-regulated by compounds that cause peroxisome proliferation, such as fenofibrate, bezafibrate and gemfibrozil (PubMed:24122873).
Similarity:	Belongs to the ABC transporter superfamily. ABCB family. Multidrug resistance exporter (TC 3.A.1.201) subfamily. [View classification]
Storage Condition and Buffer:	Rabbit IgG in phosphate buffered saline , pH 7.4, 150mM NaCl, 0.02% sodium azide and 50% glycerol.Store at -20 °C.Stable for 12 months from date of receipt.



Western blot analysis of extracts from 3T3, using MDR3 Ab. The lane on the left was treated with blocking peptide.



Western blot analysis of extracts from MCF7 cells, using MDR3 Ab. The lane on the left was treated with blocking peptide.

IMPORTANT: For western blot, incubate membrane with diluted primary Ab in 5% w/v milk , 1X TBS, 0.1% Tween@20 at 4°C with gentle shaking, overnight.

For Research Use Only. Not for use in diagnostic and therapeutic procedures. Not for resale without express authorization.